

Robot-Friendly Environmental Control Plate Holder Guide

The optional robot-friendly environmental control plate holder (Robo EC) replaces the standard environmental control option kit plate holder installed in your ImageXpress® instrument. Only Molecular Devices installs and maintains it.

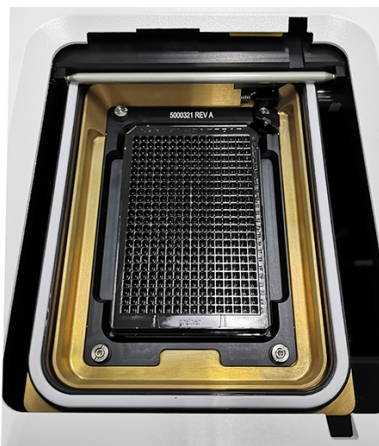


Figure 1-1: Robo EC in ImageXpress Instrument With Plate. (Plate holder color may vary.)

Use:

- Overnight experiments in a full environmental control automation platform, with a larger range of supported plate types than the Standard Environmental Control Option

The integrated live-cell sealing ring supersedes the Standard EC live-cell sealing ring (1-2600-0865) referenced in the *ImageXpress Micro Confocal System User Guide* "Loading the Sample Plate" procedures.

Microplate Compatibility:

- Most plate types, from 6-well to 1536-well
- Maximum plate height is 28 mm, including the lid, if used

Gas Requirements:

- Input CO₂ should be 7.2%, which provides an equivalent 5% in the ImageXpress instrument cell chamber
- An optional custom gas mixer is recommended

Limitations:

- Experiments over a certain time might require the Standard EC live-cell sealing ring to be placed on the plate, which limits use to only certain plate types.

Contact Us

Phone: [+1-800-635-5577](tel:+1-800-635-5577)
Web: moleculardevices.com
Email: info@moldev.com

Visit our website for a current listing of worldwide distributors.