

CellReporterXpress[®]

Image Acquisition and Analysis Software

Version 2.5

Release Notes

CellReporterXpress Image Acquisition and Analysis Software Release Notes

This document is provided to customers who have purchased Molecular Devices equipment, software, reagents, and consumables to use in the operation of such Molecular Devices equipment, software, reagents, and consumables. This document is copyright protected and any reproduction of this document, in whole or any part, is strictly prohibited, except as Molecular Devices may authorize in writing.

Software that may be described in this document is furnished under a non-transferrable license. It is against the law to copy, modify, or distribute the software on any medium, except as specifically allowed in the license agreement. Furthermore, the license agreement may prohibit the software from being disassembled, reverse engineered, or decompiled for any purpose.

Portions of this document may make reference to other manufacturers and/or their products, which may contain parts whose names are registered as trademarks and/or function as trademarks of their respective owners. Any such usage is intended only to designate those manufacturers' products as supplied by Molecular Devices for incorporation into its equipment and does not imply any right and/or license to use or permit others to use such manufacturers' and/or their product names as trademarks.

Each product is shipped with documentation stating specifications and other technical information. Molecular Devices products are warranted to meet the stated specifications. Molecular Devices makes no other warranties or representations express or implied, including but not limited to, the fitness of this product for any particular purpose and assumes no responsibility or contingent liability, including indirect or consequential damages, for any use to which the purchaser may put the equipment described herein, or for any adverse circumstances arising therefrom. The sole obligation of Molecular Devices and the customer's sole remedy are limited to repair or replacement of the product in the event that the product fails to do as warranted.

For research use only. Not for use in diagnostic procedures.

The trademarks mentioned herein are the property of Molecular Devices, LLC or their respective owners. These trademarks may not be used in any type of promotion or advertising without the prior written permission of Molecular Devices, LLC.

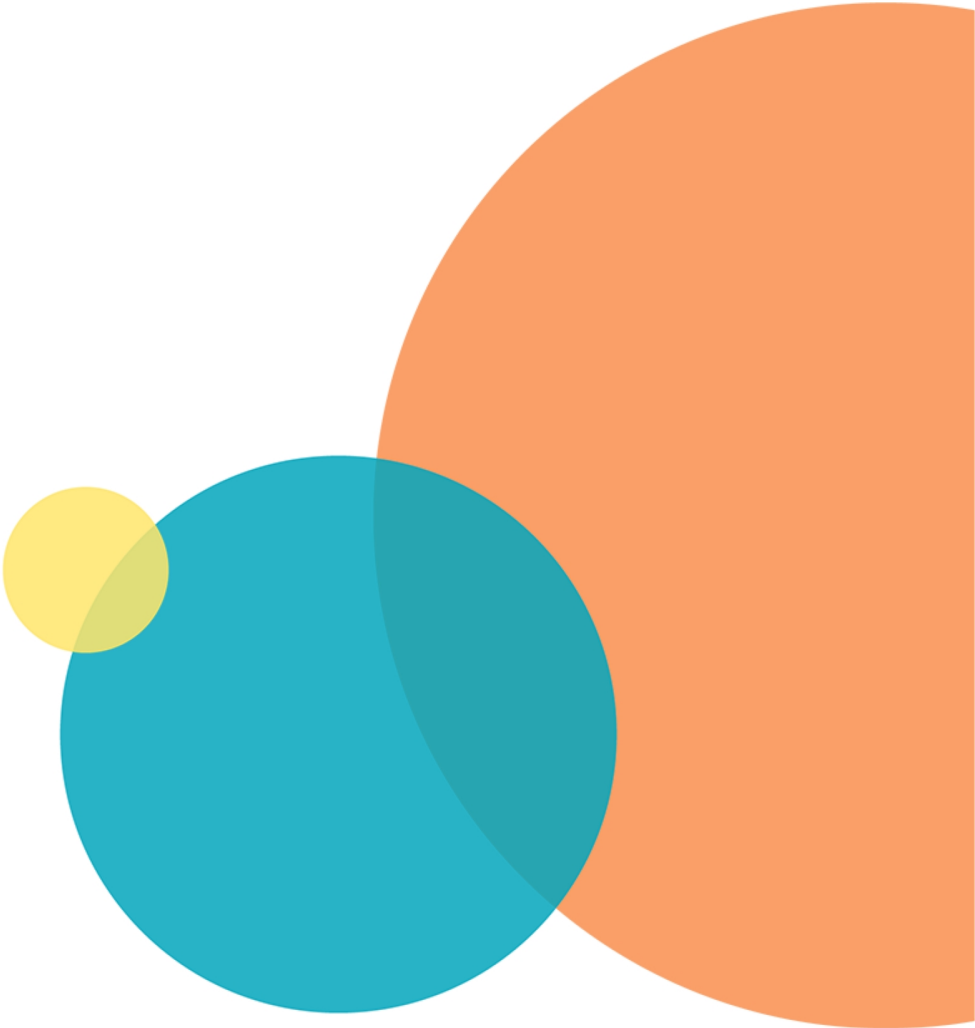
Patents: www.moleculardevices.com/patents

Product manufactured by Molecular Devices, LLC.
3860 N. First Street, San Jose, California, 95134, United States of America.
Molecular Devices, LLC is ISO 9001 registered.
©2019 Molecular Devices, LLC.
All rights reserved.



Contents

Chapter 1: CellReporterXpress Image Acquisition and Analysis Software	5
Obtaining Support	6
Product Documentation	7
About This Guide	7
Chapter 2: CellReporterXpress Version 2.5	9
New in Version 2.5 of the CellReporterXpress Software	9
Issues Addressed in Version 2.5 of the CellReporterXpress Software	15



Chapter 1: CellReporterXpress Image Acquisition and Analysis Software

The Molecular Devices® CellReporterXpress® Image Acquisition and Analysis Software is the user interface for the Molecular Devices® ImageXpress® Pico Automated Cell Imaging System.

The CellReporterXpress software integrates image acquisition and analysis into a unified workflow. Along with the ImageXpress Pico system, the CellReporterXpress software streamlines automated imaging to offer a simplified solution for scaling up microscopy. Its features include:

- A web-based interface that runs on many browsers, including those found on iPads and Android tablets.
- Over 25 available predefined experimental protocols.
- High-powered analysis tools equivalent to those found in desktop applications.
- Easy-to-manage data with no requirement to configure a database.
- A simplified user interface that is easy to learn and easy to use.

Obtaining Support

Molecular Devices is a leading worldwide manufacturer and distributor of analytical instrumentation, software, and reagents. We are committed to the quality of our products and to fully supporting our customers with the highest level of technical service.

Our Support website, www.moleculardevices.com/service-support, describes the support options offered by Molecular Devices, including service plans and professional services. It also has a link to our Knowledge Base, which contains documentation, technical notes, software upgrades, safety data sheets, and other resources. If you still need assistance after consulting the Knowledge Base, you can submit a request to Molecular Devices Technical Support.

Technical Support

You can contact Molecular Devices Technical Support by submitting a support request through the Knowledge Base or by phone. To find regional support contact information, visit www.moleculardevices.com/contact.

You need the instrument serial number.

Documentation

Review the product documentation on the Knowledge Base, including installation guides and user guides. In addition, online Help is available within the CellReporterXpress software. Press **F1** to access Help for the current page.

Additional Resources

Web-based microscopy courses:

- www.leica-microsystems.com/science-lab
- www.ibiology.org/ibioeducation/taking-courses/ibiology-microscopy-short-course.html

The Molecular Probes Handbook offers advice on fluorescent probes and can help you determine if there are better stains available for your analysis:

- www.lifetechnologies.com/us/en/home/references/molecular-probes-the-handbook.html

Product Documentation

The following guides are available on the Molecular Devices Knowledge Base at mdc.custhelp.com:

- *CellReporterXpress Installation Guide*
- *CellReporterXpress Release Notes*
- *CellReporterXpress User Guide*
- *ImageXpress Pico Pre-Installation Guide*
- *ImageXpress Pico Installation Guide*
- *ImageXpress Pico User Guide*
- *ImageXpress Pico Calibration Kit Guide*

In addition, the CellReporterXpress software includes context-sensitive Help that you can access from within the software. Just press the **F1** key from within the software to view Help for the current page.

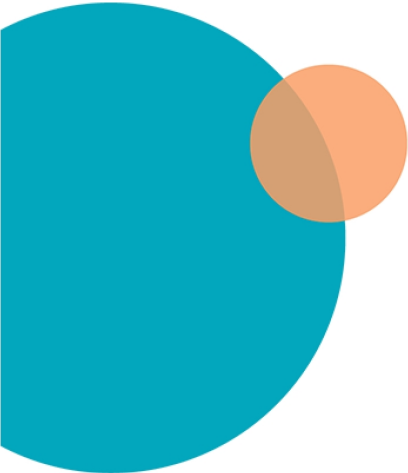


Tip: Molecular Devices recommends that you review the documentation before installing or using the ImageXpress Pico system or the CellReporterXpress software.

About This Guide

This guide is intended for the scientist or IT professional who will be installing and configuring the CellReporterXpress software. This guide describes the notable changes in this release of the CellReporterXpress software.

The information in this guide is subject to change without notice. Molecular Devices recommends that you review the guide on the Knowledge Base for the most up-to-date information.



Chapter 2: CellReporterXpress Version 2.5

Version 2.5 of the CellReporterXpress Image Acquisition and Analysis software is a minor release. This section summarizes the changes incorporated since the last release of the software.

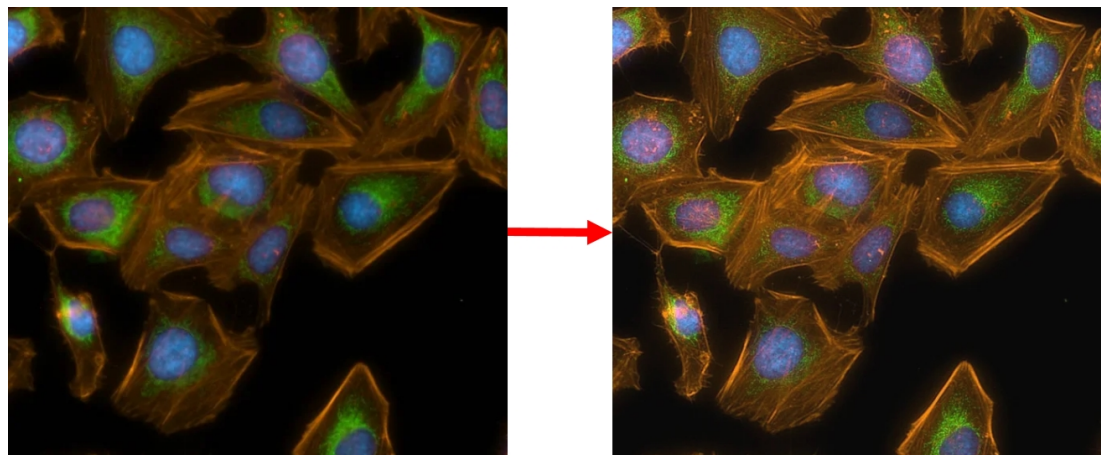
- [New in Version 2.5 of the CellReporterXpress Software, see below](#)
- [Issues Addressed in Version 2.5 of the CellReporterXpress Software, see page 15](#)

New in Version 2.5 of the CellReporterXpress Software

The following new features are included in version 2.5 of the CellReporterXpress software.

Digital Confocal

Digital confocal is a new optional (licensed) feature that uses 2D on-the-fly deconvolution to enhance contrast, improve resolution, and sharpen images, significantly increasing assay quality. By restoring light to its original point of origin, digital confocal allows you to decrease exposure time and improve the statistical significance of your observations. Digital confocal is seamlessly integrated into the fluorescent image acquisition workflow.

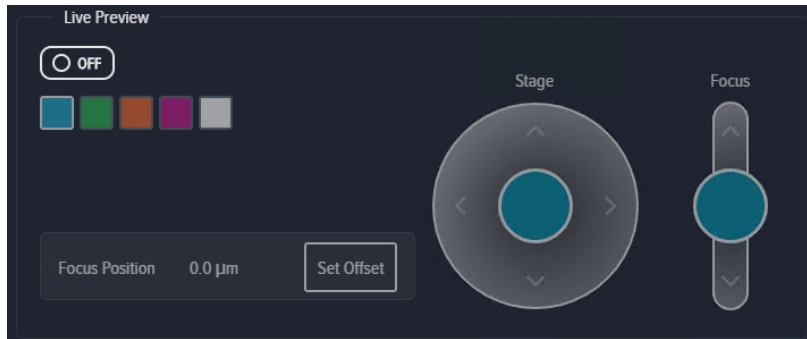


AutoQuant
integrated innovation

Digital confocal uses the AutoQuant 2D RealTime Deconvolution algorithm.

Live Preview

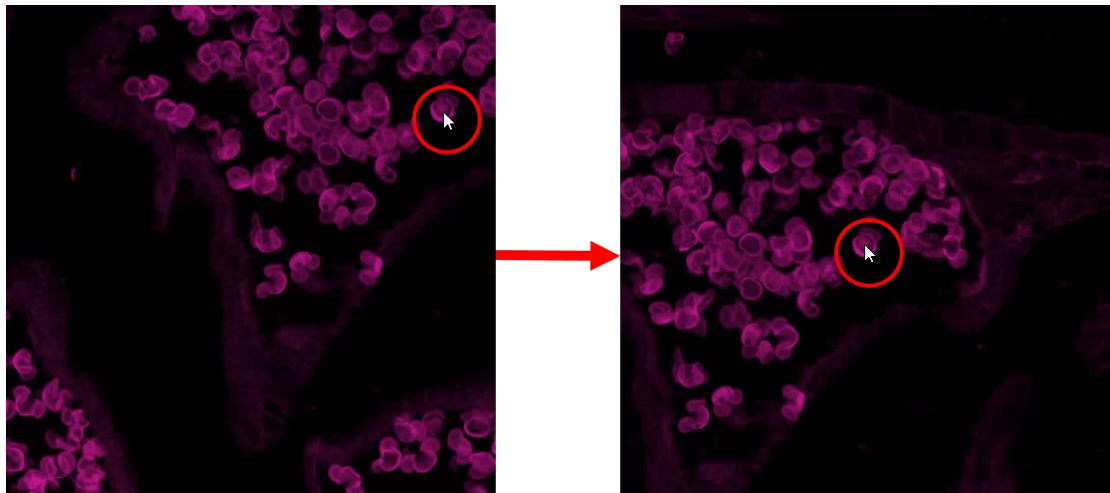
With the new live preview feature, you can move the sample (X-Y) stage to explore a continually updated, dynamic image of your sample. The two virtual joysticks allow you to visualize your experiment before acquisition, which helps you quickly and easily find a region of interest and focus in on what is important to your research.



One joystick controls stage movement, allowing you to pan around the sample.

A second joystick allows you to interactively adjust focus. Once you achieve the right focus, you can set the focus offset for the acquisition.

The "click to center" function centers the image based on the spot that you click. When you locate a region of interest, you can save the current field of view for the acquisition.



ImageXpress Pico System Improvements

Along with the release of version 2.5 of the CellReporterXpress software, the following improvements were made to the ImageXpress Pico system:

Dish Holder

The new, optional dish holder (part number 5077007) is designed for imaging up to six standard culture dishes of 35 mm (1.38 in.) in diameter.

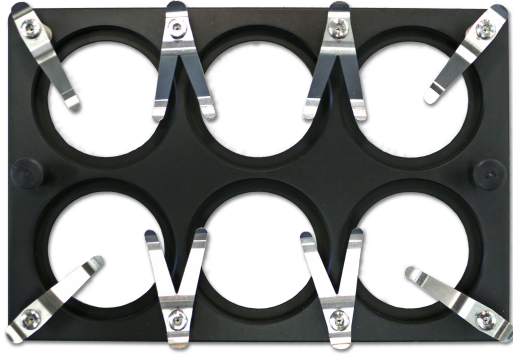


Plate Skirt Height Adapter

The optional environmental control system now includes three plate skirt height adapters (part number 5077006).



Under certain magnifications, a plate with a low skirt height may cause autofocus issues inside the environmental control cassette. The plate skirt height adapter sits inside the environmental control cassette to raise the plate, which can help autofocus succeed.

Push-to-Connect Fittings

The optional environmental control system now includes three ¼" NPT male to 6mm O.D. push-to-connect fittings (part number 5075610).



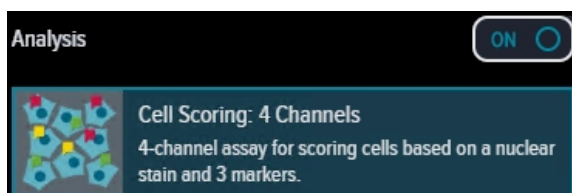
These push-to-connect fittings help you easily connect the regulator of your gas supply to the instrument.

Support for Microsoft Windows Server 2016

Microsoft Windows Server 2016 Standard Edition is now a supported operating system for the CellReporterXpress software.

Four-Channel Multi-Wavelength Cell Scoring

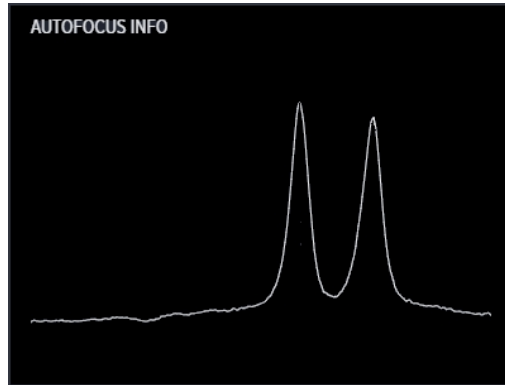
A new, optional analysis (Cell Scoring: 4 Channels) provides the ability to perform analysis with up to four fluorescent stains, furthering enhancing the ability to perform multi-wavelength cell scoring.



The four-channel multi-wavelength cell scoring analysis is ideal for counting and logging measurements of cells in multiple wavelength experiments. Using a fluorescent marker for the nucleus and additional markers for the cytoplasm, each wavelength is analyzed, and cells are assigned multiparametric phenotypic profiles.

Autofocus Info

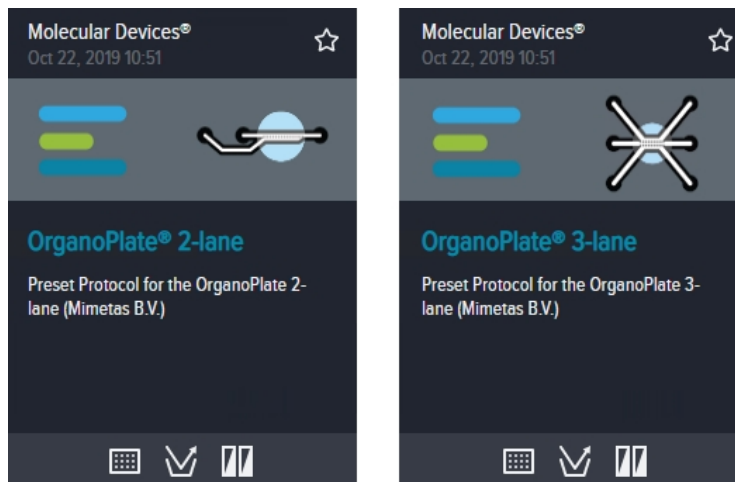
The CellReporterXpress software uses hardware and software autofocus to determine the best focus for the sample. When autofocus issues occur, they are typically caused by an incorrect configuration in the Labware Library. In many cases, the issue can be addressed by remeasuring plate dimensions and adjusting the labware configuration.



The new Autofocus Info graph on the Acquisition Settings page shows the focus peaks for the most recent autofocus to help you understand how it was determined. You can use the graph along with the information in the *CellReporterXpress Help* and *CellReporterXpress User Guide* to troubleshoot autofocus issues.

Mimetas Protocol Templates

The Template Library includes two new protocol templates that have been designed for the 384 Mimetas OrganoPlate. Use these templates to configure the acquisition of images using these plates.



CellReporterXpress Installation Utility Improvements

The CellReporterXpress Installation Utility has been redesigned to streamline the software installation process.

Increased Security

The CellReporterXpress software uses HTTP for communication. It is important to note that these HTTP connections are not secured or encrypted. You may want to avoid using insecure protocols (such as HTTP) outside of your organization's secured network in favor of using an HTTPS proxy server, which uses SSL/TLS to encrypt communications.

When configuring installations that might be exposed to outside parties, consider securing your CellReporterXpress communications. You can now secure CellReporterXpress data transfers with encryption by installing the software with a security certificate. This type of installation uses a PFX file, which is provided by your IT professional. The PFX file is a password-protected certificate archive that contains the entire certificate chain along with the matching private key.

See the *CellReporterXpress Installation Guide* for details on these increased security options.

Export Stitched TIFF Images from Experiments

You can now easily export stitched TIFF images from a CellReporterXpress experiment for further processing and analysis. Exported images can be scaled to meet the 32K x 32K pixel size required by Molecular Devices® MetaXpress® High-Content Image Acquisition and Analysis Software.

As part of this new feature, the MD Import/Export Service is no longer required by the software. For upgrading users, this service will be removed when you install CellReporterXpress version 2.5.

Documentation Changes

The CellReporterXpress Help and CellReporterXpress User Guide now contain detailed descriptions of each analysis included in the software, including explanations of the input parameters, summary measurements, and cell measurements.

Issues Addressed in Version 2.5 of the CellReporterXpress Software

The following issues were addressed in version 2.5 of the CellReporterXpress software.

Enable Object Segmentation Overlay to Be Drawn at Full Zoom Levels

Tracking ID: CRX-1061

The object segmentation overlay is not visible at full zoom. The overlay should always be drawn.

Resolution:

Corrected the issue.

Impact of fix:

This fix has no impact on current workflow or data.

Time Series Recommended Interval Does Not Include Time to Acquire Z Stack

Tracking ID: CRX-1201

For an acquisition that includes both Z stacking and a time series, the recommended interval for the time series does not include the time required to acquire each Z stack plane.

Resolution:

Corrected the issue.

Impact of fix:

This fix has no impact on current workflow or data.

Snap Fails with Maximum Image Size

Tracking ID: ITSP-436

An error results when the **Snap Image Size** configuration setting is set to **Maximum**.

Resolution:

Corrected the issue.

Impact of fix:

This fix has no impact on current workflow or data.

Acquisition Region in Duplicated Protocol Shifts If Actual Acquired Area Is Beyond Well Boundary

Tracking ID: CRX-1448

When you duplicate a protocol, the selected acquisition region is not the same as the original protocol.

Resolution:

Corrected the issue.

Impact of fix:

This fix has no impact on current workflow or data.

Configuration Settings Are Lost When Rebooting the Host Computer

Tracking ID: CRX-1458

After rebooting the host computer, configuration settings are set back to the default values.

Resolution:

Corrected the issue.

Impact of fix:

This fix has no impact on current workflow or data.

Cell Zoom Level Table Contains No Data

Tracking ID: CRX-1459

Data does not display as expected on the Cell Zoom Level Table when you select cells in the Cell Zoom Level Scatter Plot.

Resolution:

Corrected the issue.

Impact of fix:

This fix has no impact on current workflow or data.

Histogram Does Not Auto Update When Running Auto Exposure

Tracking ID: CRX-1594

When you automatically calculate the exposure time for a wavelength (by clicking **Auto** on the **Focus/Exposure Settings** tab of the **Acquisition Settings** page), the histogram on the **Image Intensity Settings** tab does not update as expected.

Resolution:

Corrected the issue.

Impact of fix:

This fix has no impact on current workflow or data.

Stitching Transmitted Light Z-Stacks with Average Projection Creates Dark First Image

Tracking ID: CRX-1622

When you acquire a transmitted light image with Z stacking, the first z stack plane is dark.

Resolution:

Corrected the issue.

Impact of fix:

This fix has no impact on current workflow or data.

Best Focus Images Have Blurred Artifact on Edge of Image

Tracking ID: CRX-1640

When you acquire fluorescent or colorimetric images with Z stacking, projection images using the **Best Focus** setting have a blurred edge artifact.

Resolution:

Corrected the issue.

Impact of fix:

This fix has no impact on current workflow or data.

Export Stitched Images: Update Pixel Scaling Metadata to Exported Images

Tracking ID: CRX-1808

When exporting a stitched image for which scaling is required, the pixel scaling data in the image metadata is not updated.

Resolution:

Corrected the issue.

Impact of fix:

If you are using an automated script to import images to another software, you no longer need to add the scaling to the images.

Slide Holder not Recognized on Startup of the Instrument

Tracking ID: CRX-1827

When the instrument is powered off and then powered on again, the software does not detect the slide holder.

Resolution:

Corrected the issue.

Impact of fix:

This fix has no impact on current workflow or data.

Z-Stacking: Transmitted Light Average Projection Returns Black Image

Tracking ID: CRX-1941

When you acquire a transmitted light image with Z stacking, the projection image is black.

Resolution:

Corrected the issue.

Impact of fix:

This fix has no impact on current workflow or data.

Unable to Select Top/Side Wells for Plates in Environmental Control Cassette

Tracking ID: CRX-1943

With the environmental control cassette and a 4x objective, the software excludes wells from acquisition as follows:

- With a 12-well plate, the top row of wells cannot be selected for acquisition.
- With a 24-well plate, the top row and both the first and last columns cannot be selected for acquisition.

Resolution:

Corrected the issue.

Impact of fix:

This fix has no impact on current workflow or data.

Opening the Top Door Turns Off CO₂ and Humidity Within Ten Seconds

Tracking ID: CRX-1947

When using environmental control, and you open the top door of the instrument, the software stops gas flow and humidity after only ten seconds. Gas flow and humidity must be restarted manually.

Resolution:

Corrected the issue. If the top door was open for less than ten minutes, gas flow and humidity restart automatically.

Impact of fix:

This fix has no impact on current workflow or data.

Contact Us

Phone: [+1-800-635-5577](tel:+1-800-635-5577)
Web: moleculardevices.com
Email: info@moldev.com

Visit our website for a current listing of worldwide distributors.