

CloneSelect™ Imager

Version 1.7.39

Software Release Notes

Version 1.7.39
July 2019

CloneSelect Imager Software Release Notes

This document is provided to customers who have purchased Molecular Devices equipment, software, reagents, and consumables to use in the operation of such Molecular Devices equipment, software, reagents, and consumables. This document is copyright protected and any reproduction of this document, in whole or any part, is strictly prohibited, except as Molecular Devices may authorize in writing.

Software that may be described in this document is furnished under a non-transferrable license. It is against the law to copy, modify, or distribute the software on any medium, except as specifically allowed in the license agreement. Furthermore, the license agreement may prohibit the software from being disassembled, reverse engineered, or decompiled for any purpose.

Portions of this document may make reference to other manufacturers and/or their products, which may contain parts whose names are registered as trademarks and/or function as trademarks of their respective owners. Any such usage is intended only to designate those manufacturers' products as supplied by Molecular Devices for incorporation into its equipment and does not imply any right and/or license to use or permit others to use such manufacturers' and/or their product names as trademarks.

Each product is shipped with documentation stating specifications and other technical information. Molecular Devices products are warranted to meet the stated specifications. Molecular Devices makes no other warranties or representations express or implied, including but not limited to, the fitness of this product for any particular purpose and assumes no responsibility or contingent liability, including indirect or consequential damages, for any use to which the purchaser may put the equipment described herein, or for any adverse circumstances arising therefrom. The sole obligation of Molecular Devices and the customer's sole remedy are limited to repair or replacement of the product in the event that the product fails to do as warranted.

For research use only. Not for use in diagnostic procedures.

The trademarks mentioned herein are the property of Molecular Devices, LLC or their respective owners. These trademarks may not be used in any type of promotion or advertising without the prior written permission of Molecular Devices, LLC.

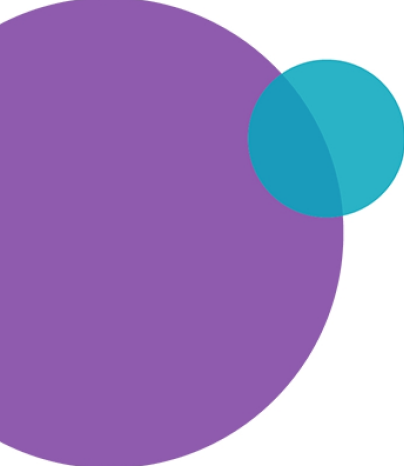
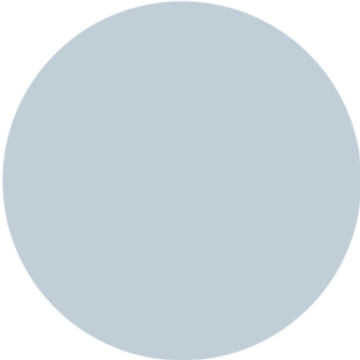
Patents: <http://www.moleculardevices.com/patents>

Product manufactured by Molecular Devices, LLC.
3860 N. First Street, San Jose, California, 95134, United States of America.
Molecular Devices, LLC is ISO 9001 registered.
©2019 Molecular Devices, LLC.
All rights reserved.



Contents

- Chapter 1: CloneSelect Imager Software Version 1.7.39 Release Notes 5**
 - Modifications Made to CloneSelect Imager Software v1.7.39 5
 - Issues Addressed in CloneSelect Imager Software v1.7.39 5
- Chapter 2: CloneSelect Imager Software Version 1.6 Release Notes 7**
 - New in CloneSelect Imager Software v1.6 7
- Chapter 3: CloneSelect Imager Software Version 1.5 Release Notes 9**
 - New in CloneSelect Imager Software v1.5 9
- Chapter 4: CloneSelect Imager Software Version 1.4.35 Release Notes11**
 - Issues Addressed inCloneSelect Imager Software v1.4.35 11
- Chapter 5: CloneSelect Imager Software Version 1.4.31 Release Notes13**
 - Issues Addressed inCloneSelect Imager Software v1.4.31 13
- Chapter 6: CloneSelect Imager Software General Information 14**
 - Computer System Requirements14
 - Backing Up the Configuration File 14
 - Uninstalling the Current the Software16
 - Installing the CloneSelect Imager Software Upgrade16
 - Obtaining a License for the Software16
 - Obtaining Support20



Chapter 1: CloneSelect Imager Software Version 1.7.39

Release Notes

1

The version 1.7.39 update is a minor release. The following is a summary of the changes incorporated in this revision as compared to version 1.6, the last general release of the software.

Modifications Made to CloneSelect Imager Software v1.7.39

The following modifications were made in CloneSelect Imager Software Version 1.7.39.

New Basler Camera Support

A Basler CMOS camera replaces the CCD camera in new instruments. This CloneSelect Imager Software update supports both new and existing cameras.

Issues Addressed in CloneSelect Imager Software v1.7.39

The following issues were addressed in software version 1.7.39.

Colony Area Distribution Selection Crashes During Data Export

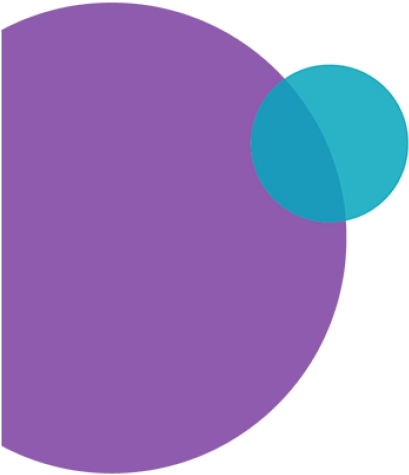
The software crashes during **Data Export**, when **Colony area distribution** is selected with **Minimum Area to be greater than or equal to Maximum Area**.

Resolution:

Fixed.

Impact of fix:

This fix has no impact on current workflow or data.



Chapter 2: CloneSelect Imager Software Version 1.6 Release Notes

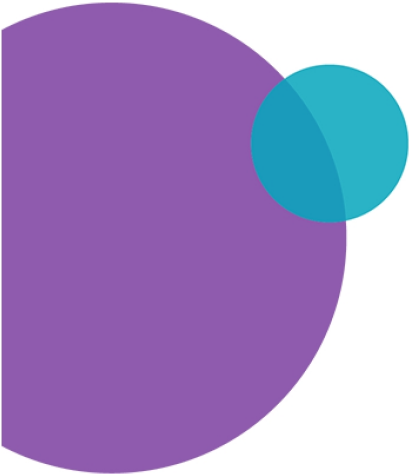
The version 1.6 update is a minor release. The following is a summary of the changes incorporated in this revision as compared to version 1.5, the last general release of the software.

New in CloneSelect Imager Software v1.6

The following new features are included in version 1.6.

MonoClonality Report Generation

Generate report documents to show evidence of monoclonal wells.



Chapter 3: CloneSelect Imager Software Version 1.5 Release Notes

The version 1.5 update is a minor release. The following is a summary of the changes incorporated in this revision as compared to version 1.4.35, the last general release of the software.

New in CloneSelect Imager Software v1.5

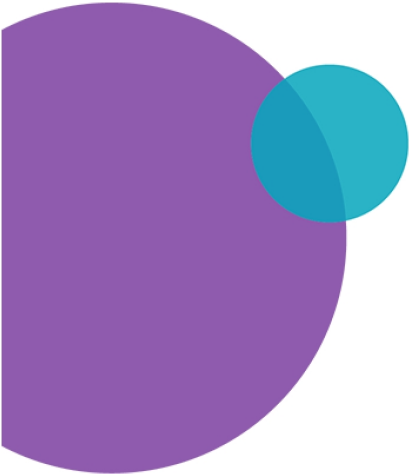
The following new features are included in version 1.5.

Windows 10 Operating System Support

Adds software support for the Windows 10 (64-bit) operating system.

Excluded Wells Data Options

Specify how to export excluded wells data, either **Exclude from export** entirely, or **Include, but export as zero value**.



Chapter 4: CloneSelect Imager Software Version 1.4.35 Release Notes

The version 1.4.35 update is a minor release. The following is a summary of the changes incorporated in this revision as compared to version 1.4.31, the last general release of the software.

Issues Addressed in CloneSelect Imager Software v1.4.35

The following issues were addressed in software version 1.4.35.

Automation Plate Vacuum Timing Causes Plate Shifting

Tracking ID: 4826

Plates shift during the Automation process. During automation, the well alignment for a Costar plate drifts so that the overlay is not aligned with the plate. The drift is random and occurs after the first plate.

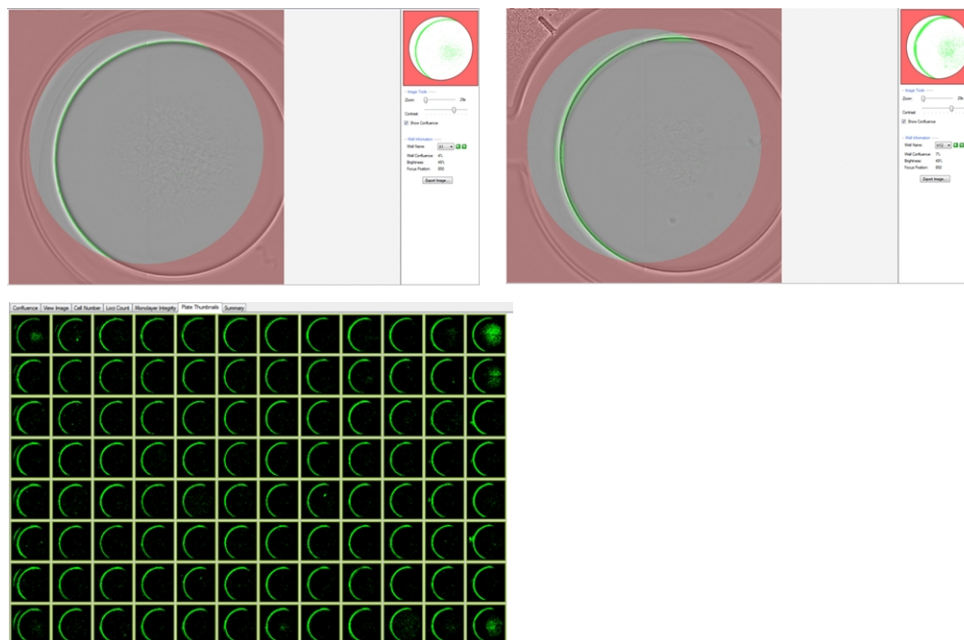


Figure 4-1: Shifting

Resolution:

The shifting is fixed, and the software in automation mode now reads the plates correctly.

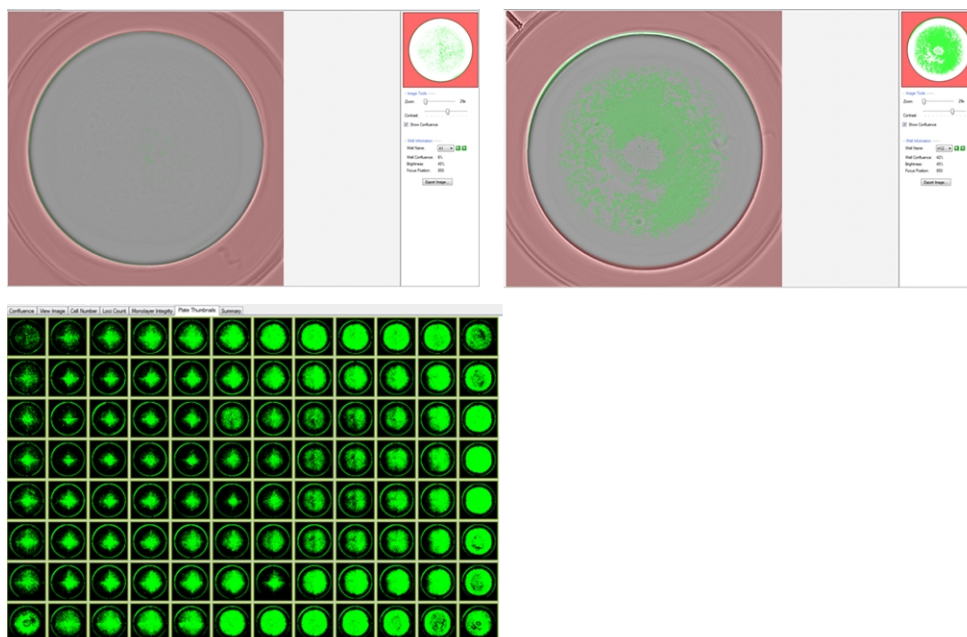


Figure 4-2: No Shifting

Impact of fix:

Manually pushing the plate to A1 after a robot loads it is no longer required.

Chapter 5: CloneSelect Imager Software Version 1.4.31

Release Notes



5

The version 1.4.31 update is a minor release. The following is a summary of the changes incorporated in this revision as compared to version 1.3.73, the last general release of the software.

Issues Addressed in CloneSelect Imager Software v1.4.31

The following issues were addressed in software version 1.4.31.

Loci Count Image Export Overwrites Original Image

Tracking ID: 4724

In Loci Count > Review Results, after selecting the Exporting Image Sequence, the original images are replaced by the one new export image and all look the same.

Resolution:

This issue has been fixed in the software.

Impact of fix:

This fix has no impact on current workflow or data.

Exporting Image Sequence of Too Many Images Causes Software Crash

Tracking ID: 4781

When attempting to do an **Export Image Sequence** of more than 80 image reads, a warning message stating that the sequence is too large to export is displayed. Clicking **OK** causes the display of an **unhandled exception** error message.

Resolution:

This issue has been fixed in the software. When plates are run more than 20 times and **Export Image Sequence** is selected, the **Unable to Export** message is displayed.

Impact of fix:

This fix has no impact on current workflow or data.

Chapter 6: CloneSelect Imager Software General Information

The CloneSelect™ Imager Software controls the CloneSelect™ Imager instrument.

The following topics are included in this chapter:

- [Computer System Requirements](#)
- [Backing Up the Configuration File](#)
- [Uninstalling the Current the Software on page 16](#)
- [Installing the CloneSelect Imager Software Upgrade on page 16](#)
- [Obtaining a License for the Software on page 16](#)
- [Obtaining Support on page 20](#)

Computer System Requirements

The CloneSelect Imager Software requires the following computer specifications:

Table 6-1: Computer System Requirements

Item	Description
Operating system	Windows 10, 64-bit Windows 7, 32-bit (x86) minimum
Memory	4 GB RAM minimum
Data Connection	10/100 Ethernet port
Camera Connection	USB 3.0 port



CAUTION! Do not replace or upgrade the computer operating the system. The computer supplied with your system includes hardware and driver components specifically configured to control your CloneSelect Imager instrument.

Backing Up the Configuration File

Before removing the previous installation of the software, you must back up the configuration in case you need to reinstall it later.

The recommended process is two steps:

1. [Add a Windows System Restore Point on page 15](#)
2. [Back up CloneSelect Imager Software on page 15](#)

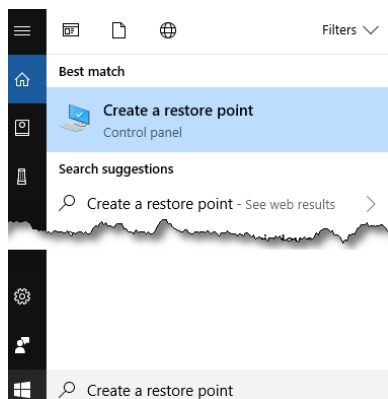
Add a Windows System Restore Point

If you are using the Windows 7 operating system, do the following:

1. Click **Start > Control Panel > System and Security**, and then click the **System** link.
From the **Start** menu, you can also get to the **System** screen by typing **SYSTEM** in the **Search** field, and then click **System** from the results list.
2. In the left panel, click the **System Protection** link.
3. In the **System Properties** dialog, click the **System Protection** tab and then click **Create**.
4. In the **Create a Restore Point** dialog, choose a name that you will remember, such as the current date or the name of a program you are about to install.
5. When the message **The restore point was created successfully** appears, click **Close**.
6. In any other related open dialogs, click **Close** to finish.

If you are using the Windows 10 operating system, do the following:

1. In the **Start** search field, type **CREATE A RESTORE POINT**, and select **Control panel**.



2. In the **System Properties** dialog, in the **System Protection** tab, select the main system drive, and click **Create**.
3. Type a description to identify the restore point.
4. Click **Create**.
5. When the message **The restore point was created successfully** appears, click **Close**.
6. In any other related open dialogs, click **Close** to finish.

Back up CloneSelect Imager Software

To back up your current configuration:

1. Click **Start > All Programs > Molecular Devices > CloneSelect > Configuration Manager**.
2. In the **Fusion Configuration Manager**, click **Backup To File**.

3. In the **Backup Fusion Configuration** dialog, type the version number of the currently installed software and the date and then click **OK**.
4. In the **Save Configuration File** dialog, locate and select the folder where you want to save the backup file, type a **File name**, and then click **Save**.

Uninstalling the Current the Software

To uninstall the current software:

1. Click **Start > Control Panel**.
2. Under **Programs**, click **Uninstall a program**.
3. From the list of programs, click CloneSelect Imager.
4. Click **Uninstall**.
5. Follow the on-screen instructions to finish uninstalling the software.

Installing the CloneSelect Imager Software Upgrade

To install the software upgrade:

1. Download the upgrade installation files to the system computer.
2. Double click the **CloneSelect Imager v.1.7.x.msi** file to start the installation program.
3. Follow the on-screen instructions to finish installing the software upgrade.
4. Select **Setup Type: Typical**.
5. Contact Molecular Devices Technical Support for the upgrade license. See [Obtaining Support on page 20](#).

Obtaining a License for the Software

The first time that you start the your Molecular Devices software after completing the installation, the software prompts you for a license.

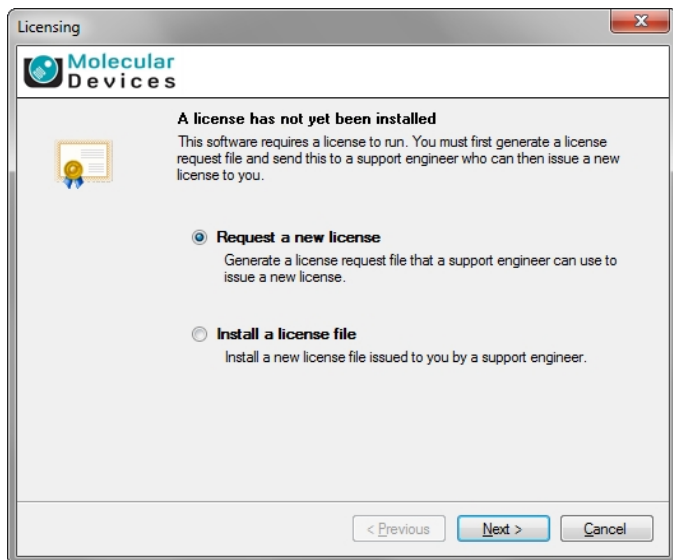
Obtaining a software license is a two-part process involving the following:

- [Requesting a Software License on page 17](#)
- [Installing a Software License on page 18](#)

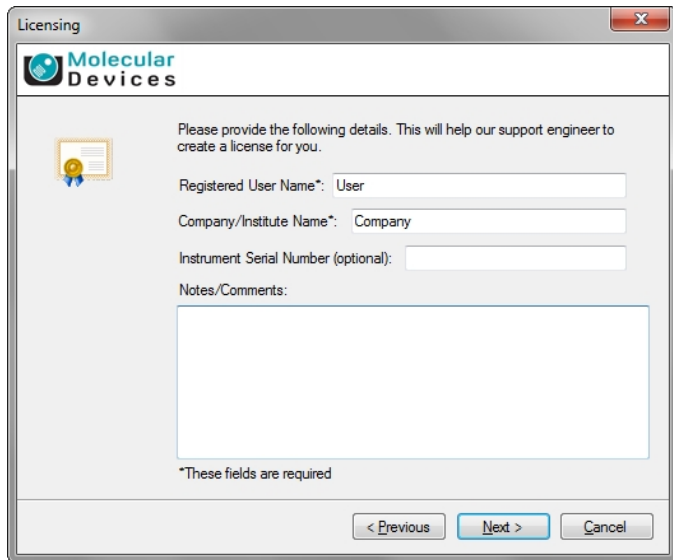
Requesting a Software License

To request a new software license:

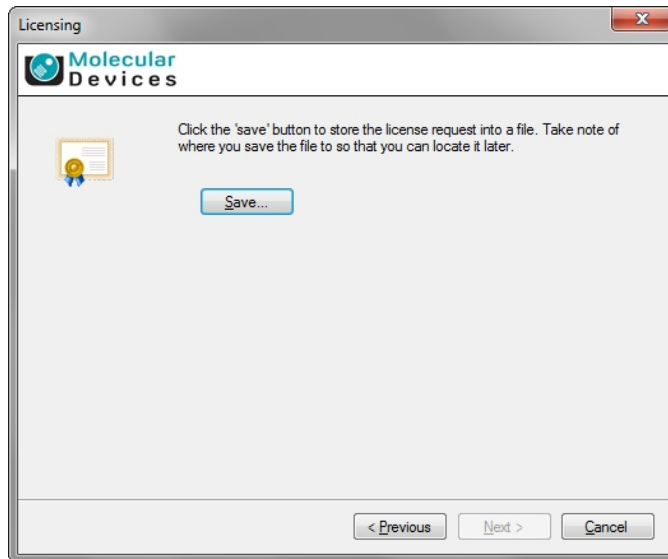
1. In the license message dialog, click **Yes**.
2. In the license request wizard, select **Request a new license**, and then click **Next**.



3. Enter the requested information, and then click **Next**.



4. To save the request file to a location on your computer for attaching it to an email, click **Save**.



5. In the **Save the request to a file** dialog, save the file in a location where you can easily find it.
6. To close the wizard, click **Finish**.
7. Change the **LicenseRequest.req** file name to a **LicenseRequest.txt** file, and then email it to Molecular Devices Technical Support. See www.moleculardevices.com/service-support.
8. After you receive the license file, save it on the system computer where it is easily accessible, and then install the license.

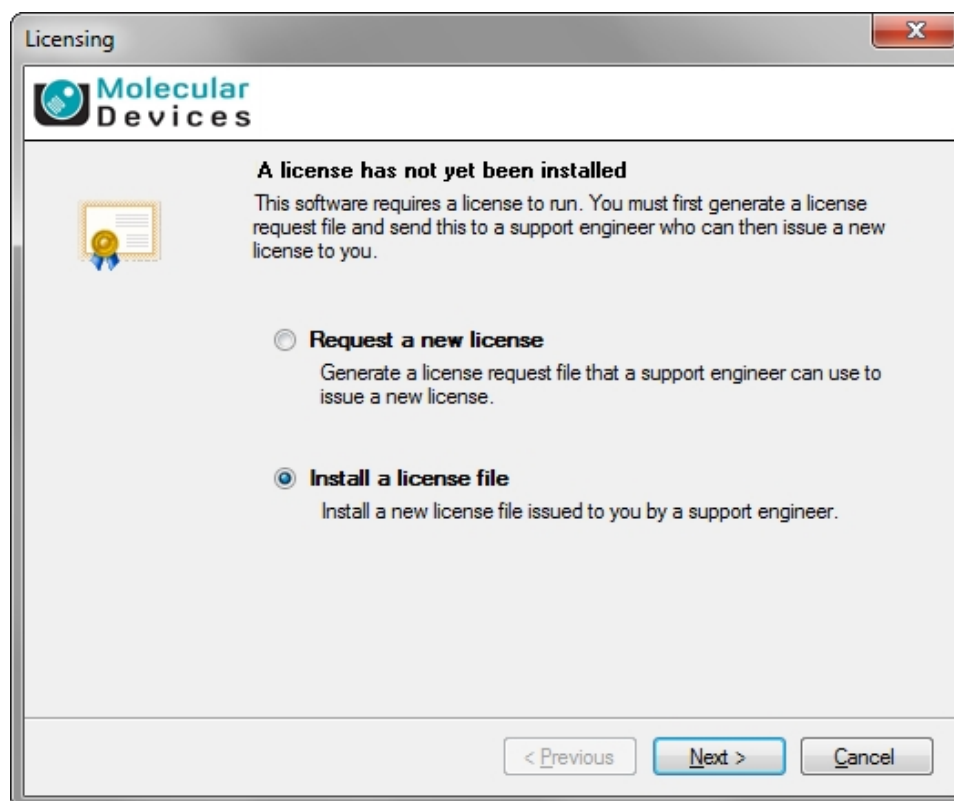
Installing a Software License

After you receive your license from Molecular Devices Technical Support, do the following:

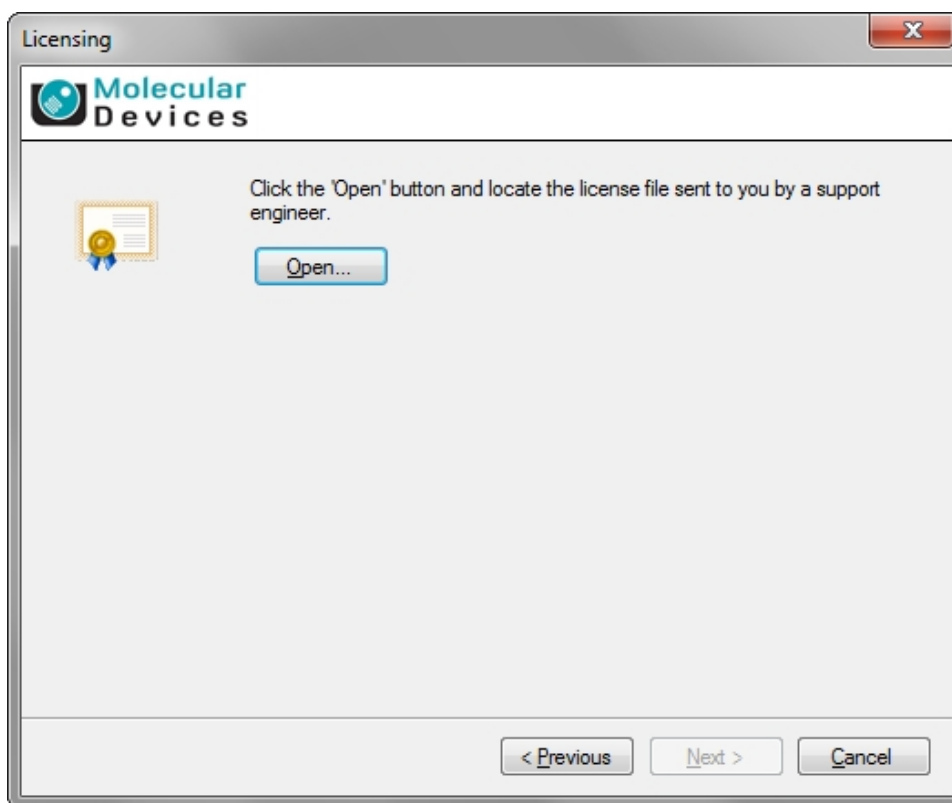
To install a software license:

1. From the computer desktop, double-click the CloneSelect Imager icon to start the software.

2. In the **Licensing** dialog, select **Install a license file** and then click **Next**.



3. Click **Open**.



4. In the **Select the License File to install** dialog, locate and select the license file you previously saved, and then click **Open**.
5. After the license file automatically installs, click **Finish**.

Obtaining Support

Molecular Devices is a leading worldwide manufacturer and distributor of analytical instrumentation, software, and reagents. We are committed to the quality of our products and to fully supporting our customers with the highest level of technical service.

Our Support website, www.moleculardevices.com/service-support, has a link to the Knowledge Base, which contains technical notes, software upgrades, safety data sheets, and other resources. If you still need assistance after consulting the Knowledge Base, you can submit a request to Molecular Devices Technical Support.

You can contact your local representative or Molecular Devices Technical Support at 800-635-5577 (North America only) or +1 408-747-1700. In Europe, call +44 (0) 118 944 8000.

Please have your instrument serial number or Work Order number, and your software version number available when you call.



WARNING! BIOHAZARD. It is your responsibility to decontaminate components of the instrument before you return parts to Molecular Devices for repair. Molecular Devices does not accept items that have not been decontaminated where it is applicable to do so. If parts are returned, they must be enclosed in a sealed plastic bag stating that the contents are safe to handle and are not contaminated.

Contact Us

Phone: [650.322.1360](tel:650.322.1360)
Web: fortebio.com
Email: info@fortebio.com

Visit our website for a current listing of worldwide distributors.

The trademarks used herein are the property of Molecular Devices, LLC or their respective owners.
Specifications subject to change without notice. Patents: www.moleculardevices.com/productpatents
FOR RESEARCH USE ONLY. NOT FOR USE IN DIAGNOSTIC PROCEDURES



©2019 Molecular Devices, LLC.
All rights reserved.
Version 1.7.39