

ClonePix FL Installing the Software

Overview

This document describes how to install the ClonePix FL software, including drivers and other prerequisites. These instructions need only be followed when setting up a new PC from scratch. If you are upgrading a PC that is already running the ClonePix FL Software to a more recent version, see the software upgrade instructions instead.

PC Requirements

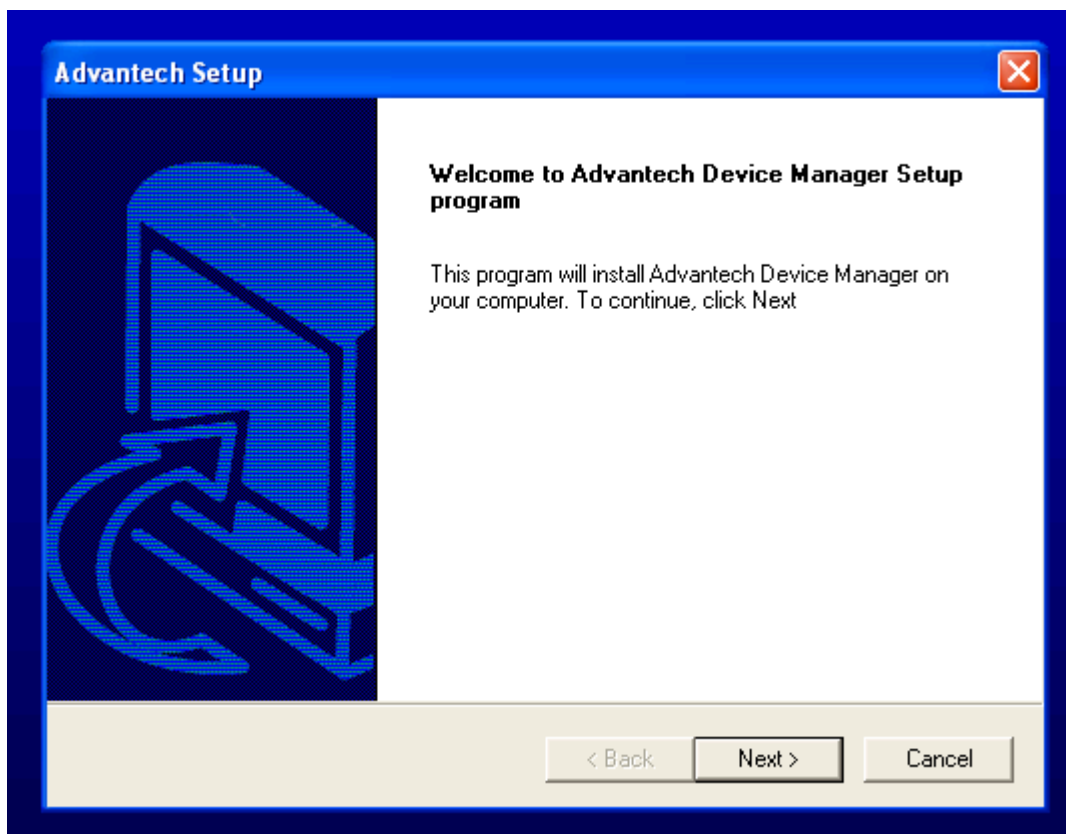
Versions 1.2.3.842 and later of the software require 2GB of memory in order to operate.

Install the drivers as described below *before* installing or plugging in the hardware to the PC.

The software requires Windows XP with Service Pack 3 applied. If you see an error message referring to an incorrect version of Windows Installer, apply Windows XP Service Pack 3 to resolve the issue.

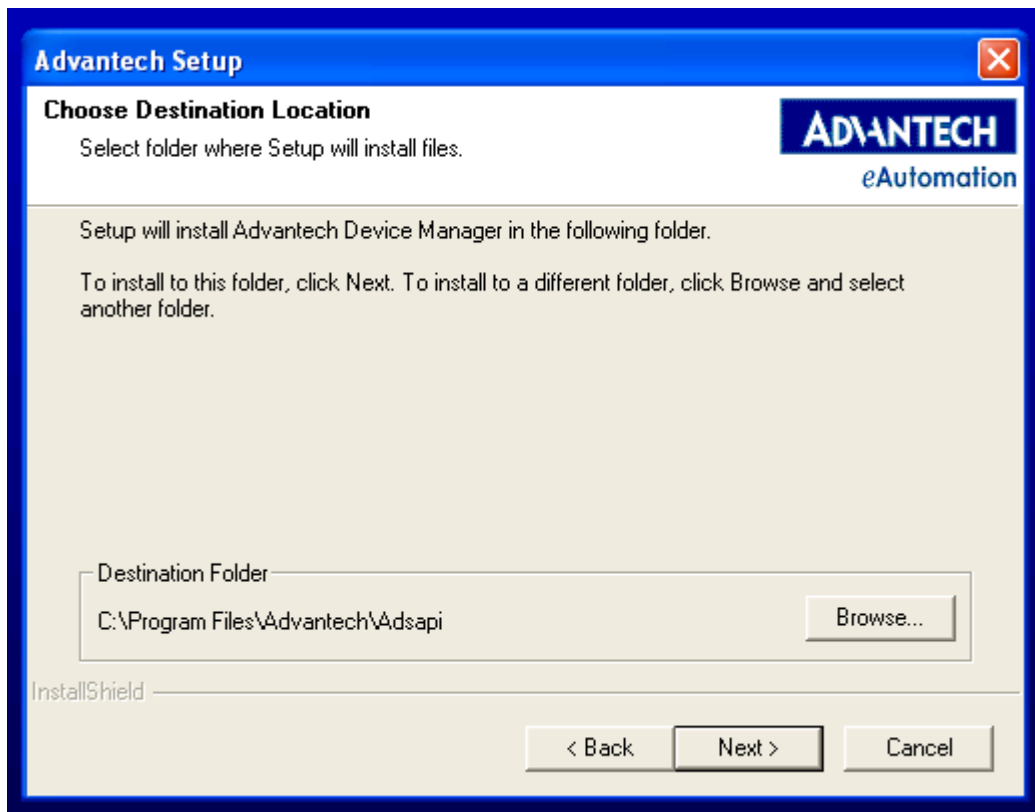
Advantech PCI1730 Digital IO Board

1. Navigate to the folder "Drivers\Advantech PCI 1730" on the recovery DVD, and run the "DevMgr.exe" file.

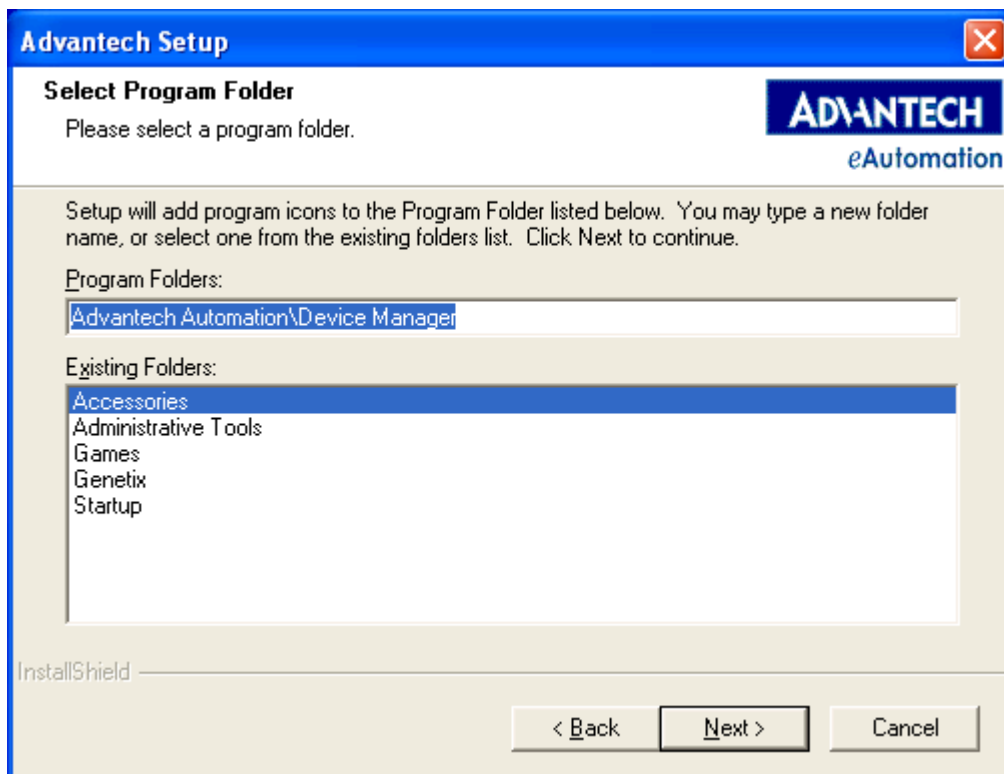


2. Click 'Next', then click 'Yes' to agree to the license agreement.

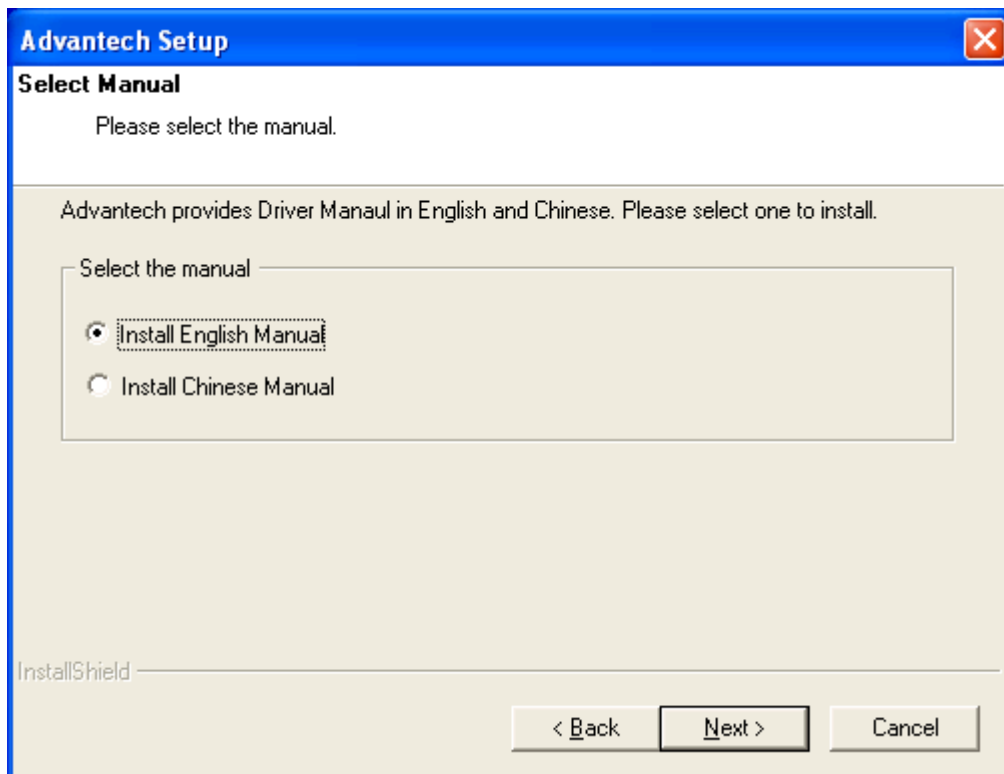




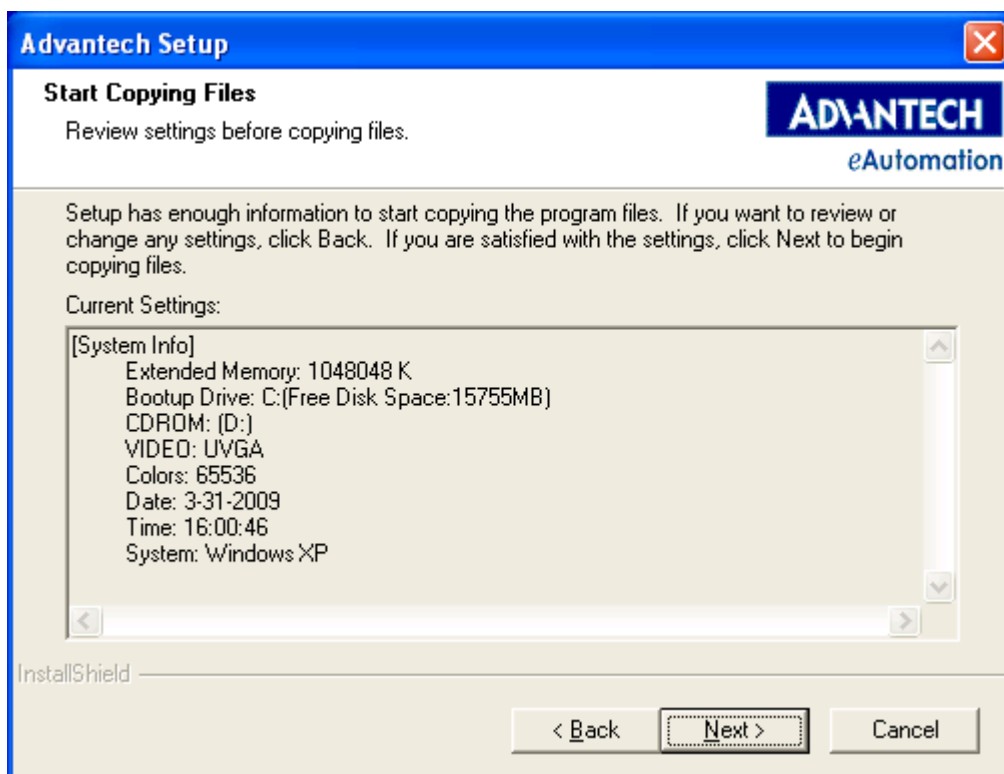
3. Click 'Next' to continue.



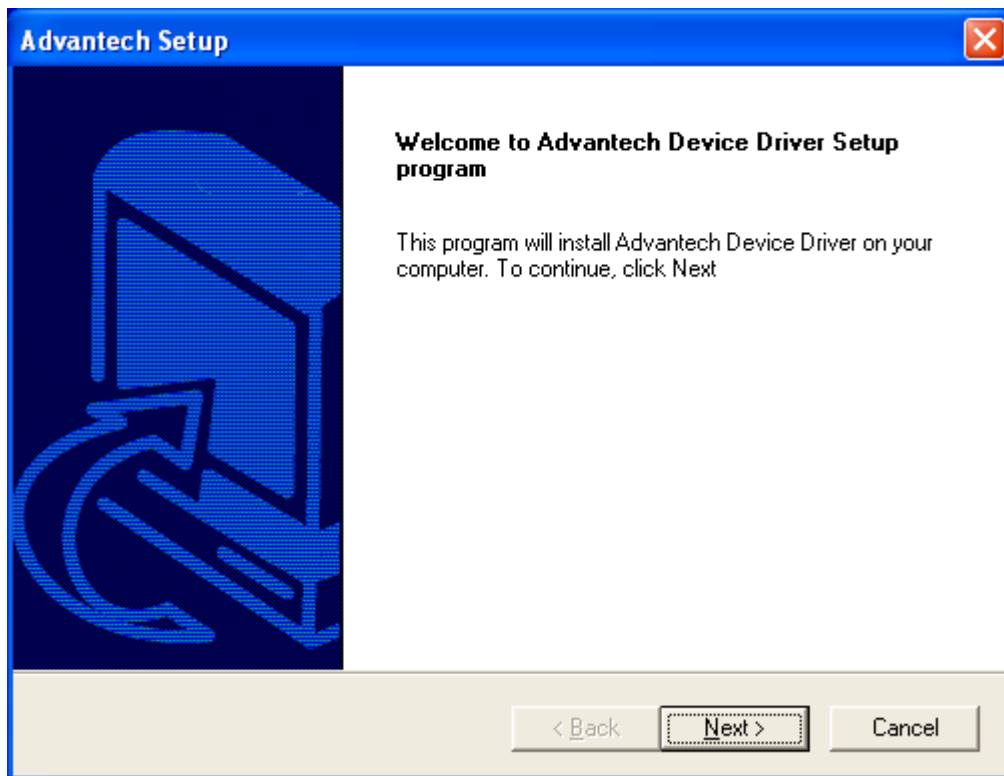
4. Click 'Next' to continue.



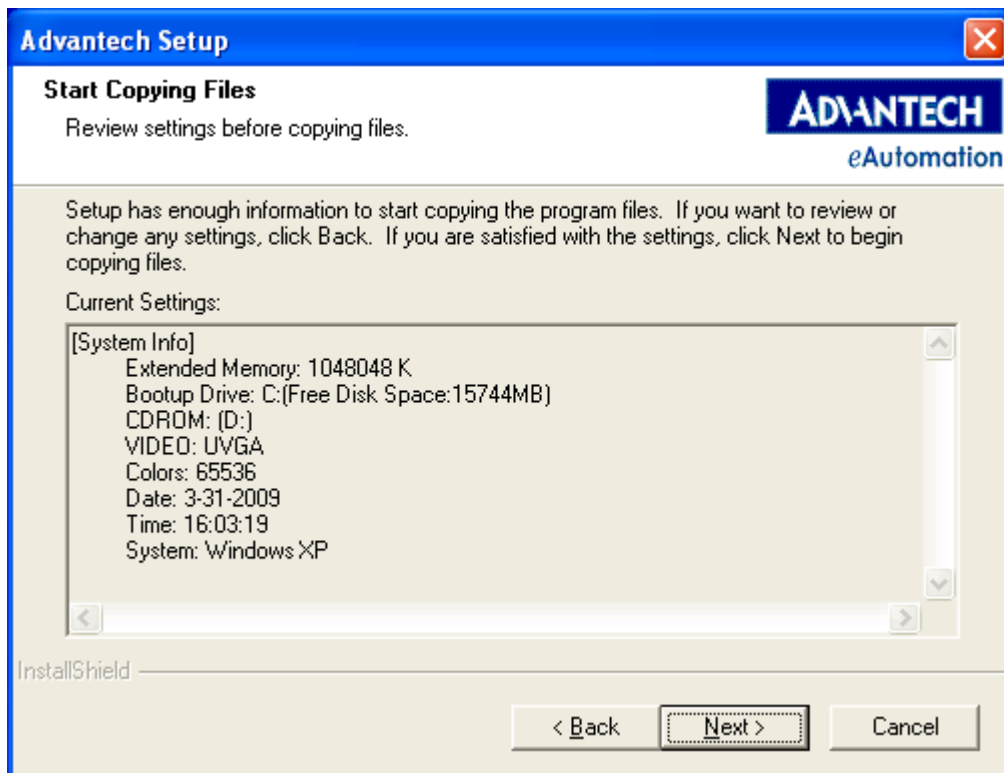
5. Click 'Next' to continue.



6. Click 'Next' to continue. The setup program automatically closes once the installation is complete.
7. Run the "PCI1730.exe" program from the same location on the recovery DVD.



8. Click 'Next' to continue.



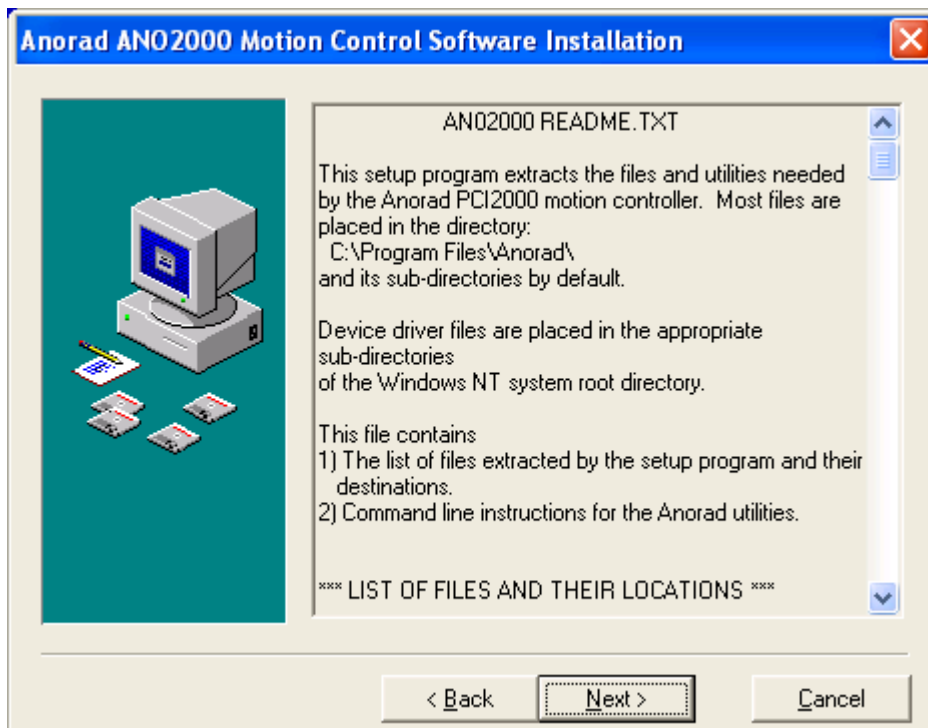
9. Click 'Next' to continue.
10. The driver setup program automatically closes once the installation is complete.

Anorad PCI2000 Motion Controller

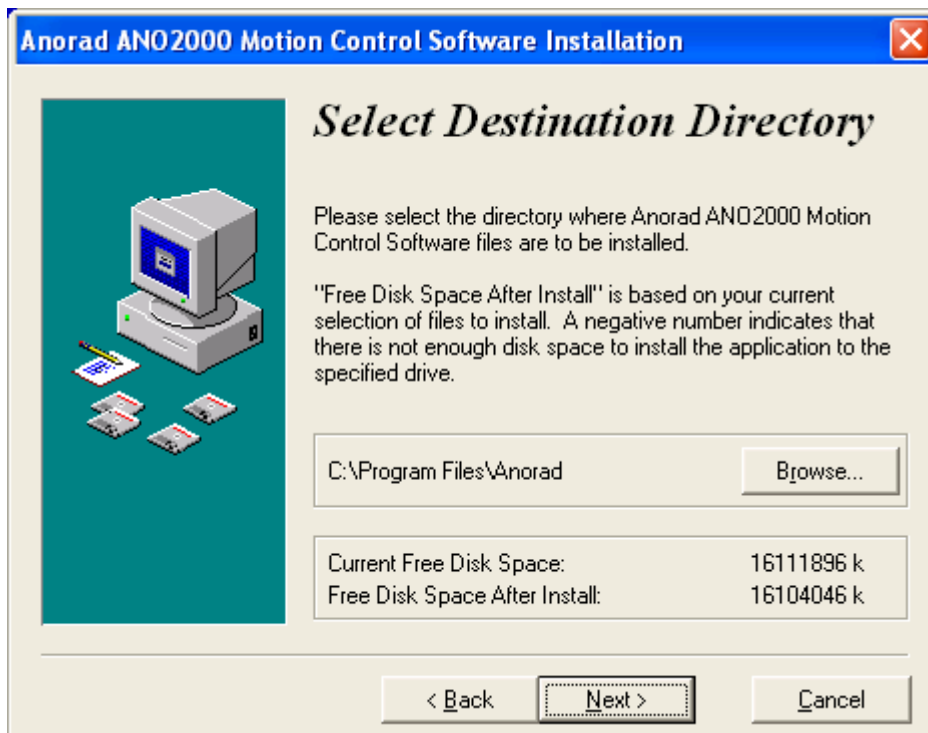
1. Navigate to the "Drivers\Anorad" folder on the recovery DVD.
2. Run the "ano2000.exe" file.



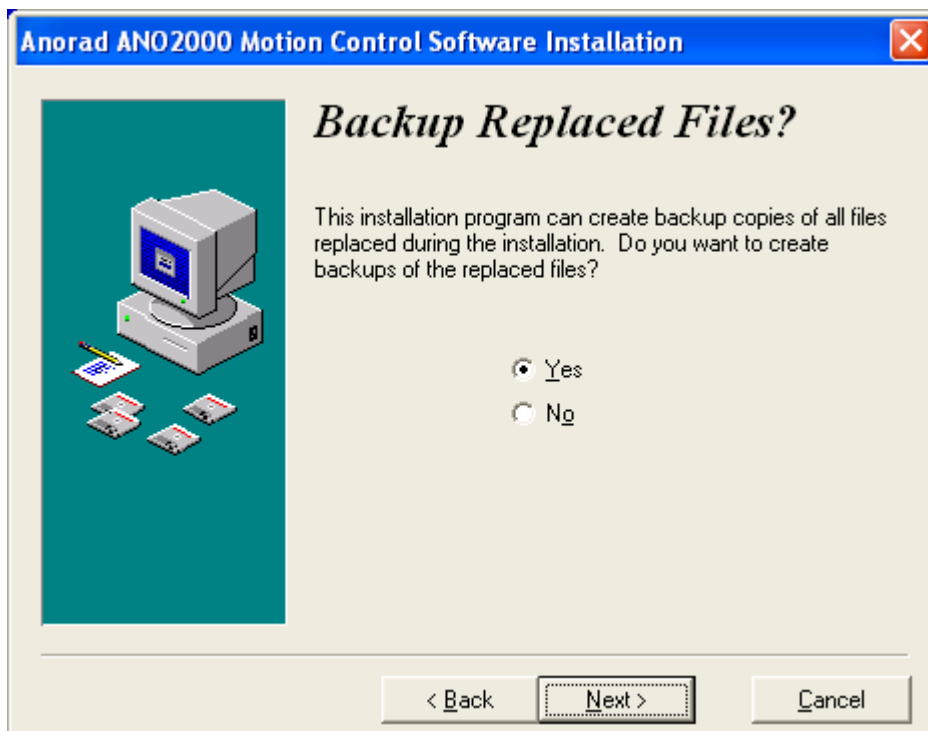
3. Click 'Next' to continue.



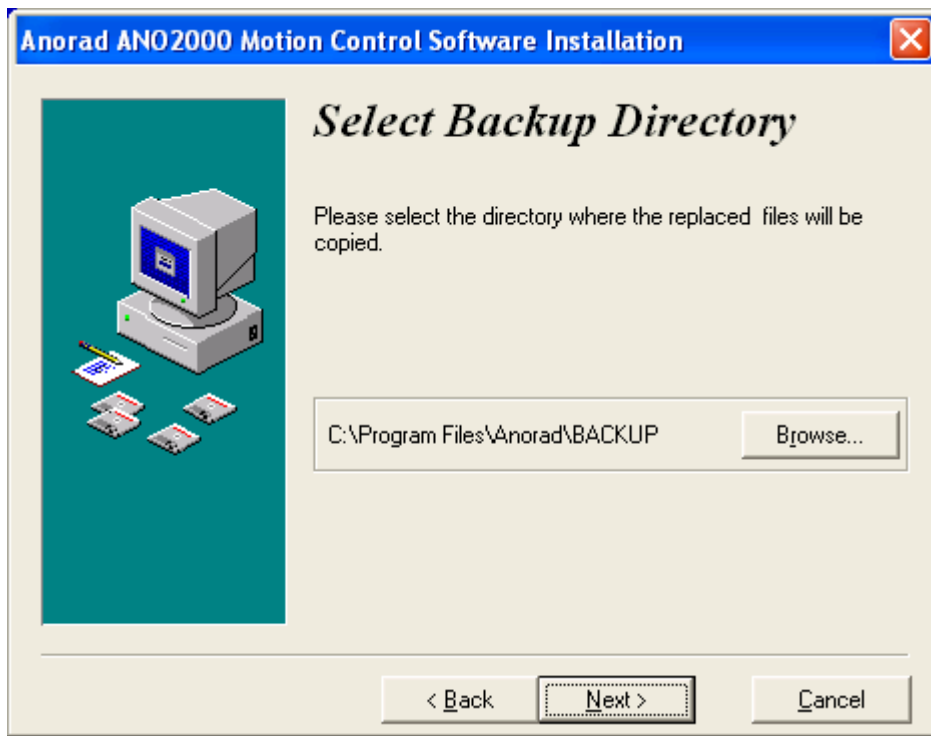
4. Click 'Next' to continue.



5. Click 'Next' to continue.



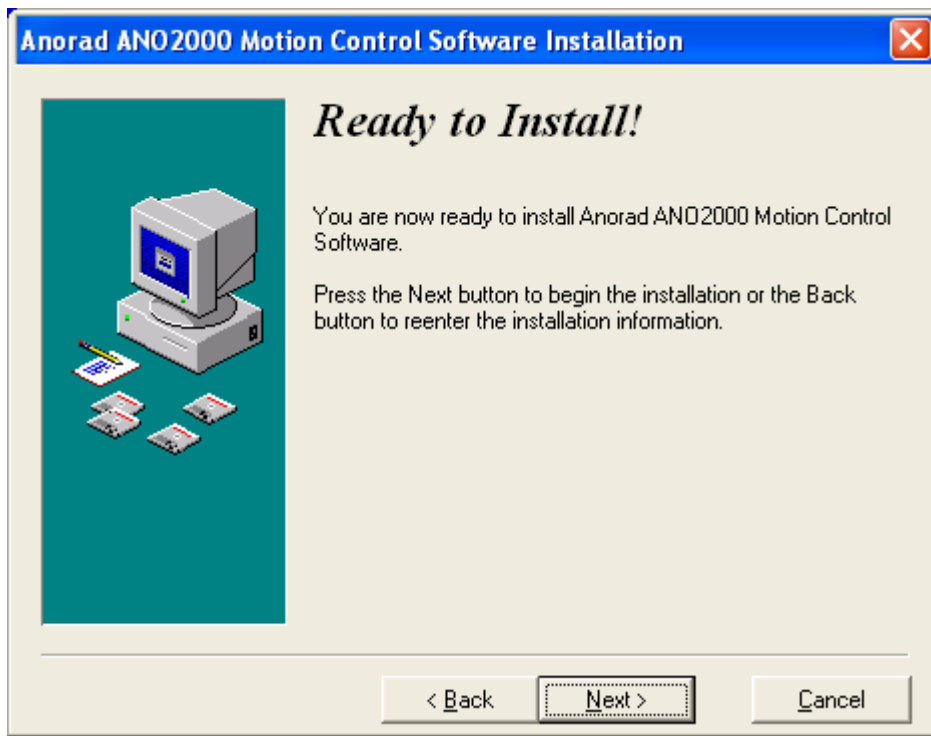
6. Click 'Next' to continue.



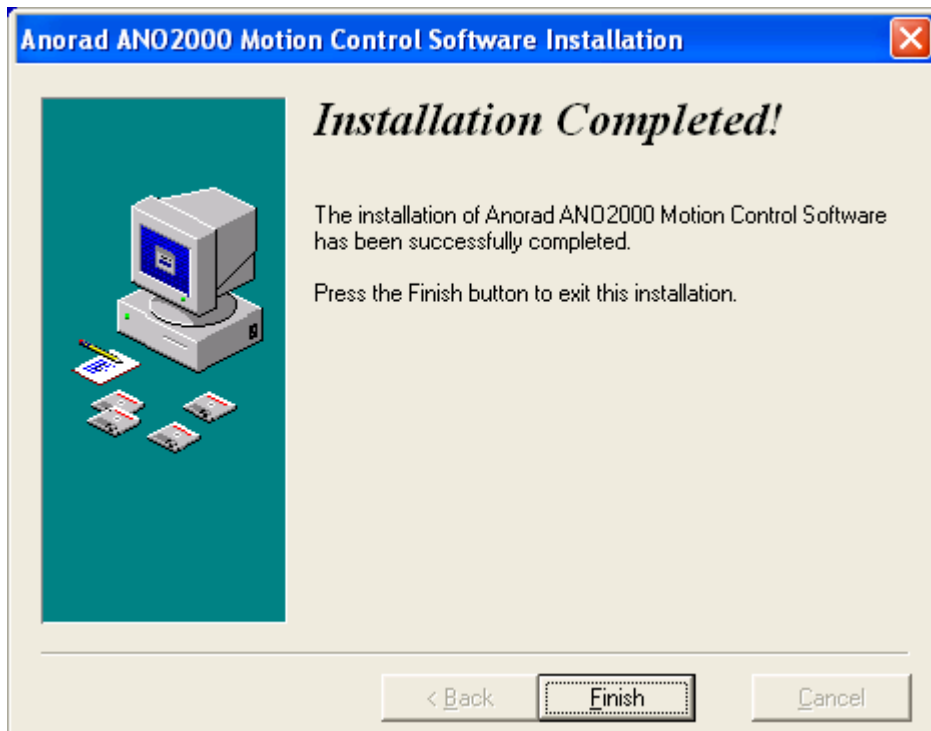
7. Click 'Next' to continue.



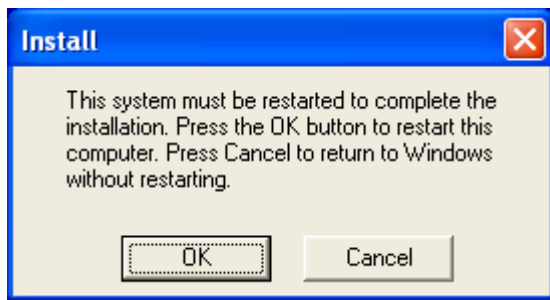
8. Click 'Next' to continue.



9. Click 'Next' to continue.



10. Click 'Finish' to complete the installation.



11. Click 'OK' to restart Windows for changes to take effect.
12. Navigate to the "Drivers\Anorad" folder on the recovery DVD again.
13. Copy the "cfg.prm" file in that folder to the folder on the PC at "C:\Program Files\Anorad\bin", replacing the file already in that folder.

Digi Serial Card

Once the multi-way serial card is installed in the PC, Windows will automatically detect it. Follow any prompts that appear to allow Windows to automatically install the default drivers.

SBIG ST-3200 Camera

1. Open the folder "Drivers\SBIG ST-3200\InstOps5R37" on the recovery DVD.
2. Run the 'InstOps.exe' file.
3. Proceed through a variety of screens. At each screen, you will need to click **OK** or **Next** to proceed without changing any options. There are approximately 6 screens to pass through before installation is complete.



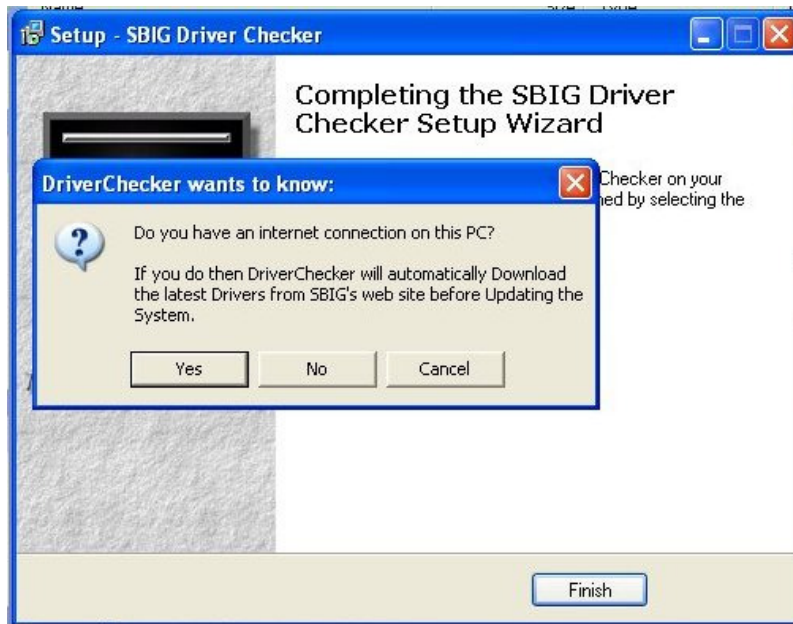
4. Once installation is complete, navigate to the folder "Drivers\SBIG ST-3200\SetupDriverChecker1r50B7" on the recovery DVD.
5. Run the file 'SetupDriverChecker.exe' to install the driver checker



6. Click **Next** on all screens without changing any of the options or directories etc
7. Once installation is complete, the final screen will ask if you want to launch the SBIG driver checker. Ensure that the box is checked (see below) and click **Finish**.



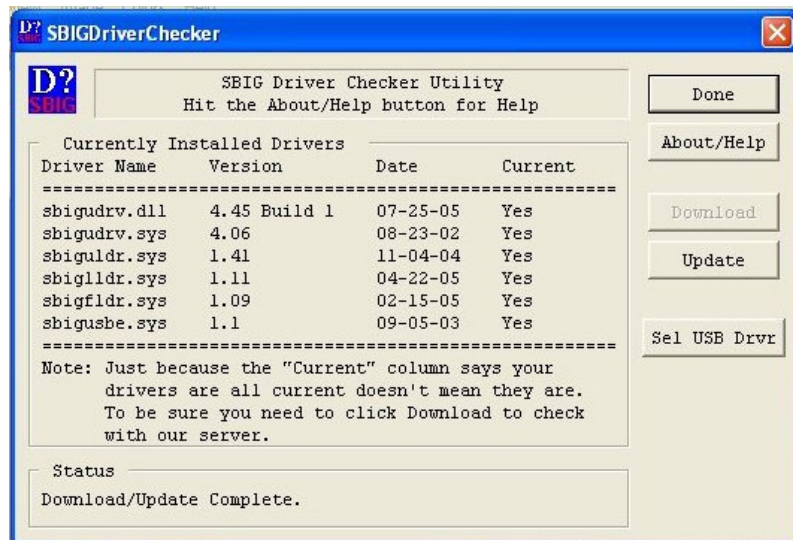
8. When the driver checker launches it will prompt for an internet connection, click **No** to proceed.



9. Click **Continue Anyway** when the warning about Windows driver signing appears



10. Once driver checker runs and complete, it should show all drivers as current. Screenshot below last column shows results. If it does not, seek assistance from Customer Support.



11. Once this is complete, click **Done** to complete

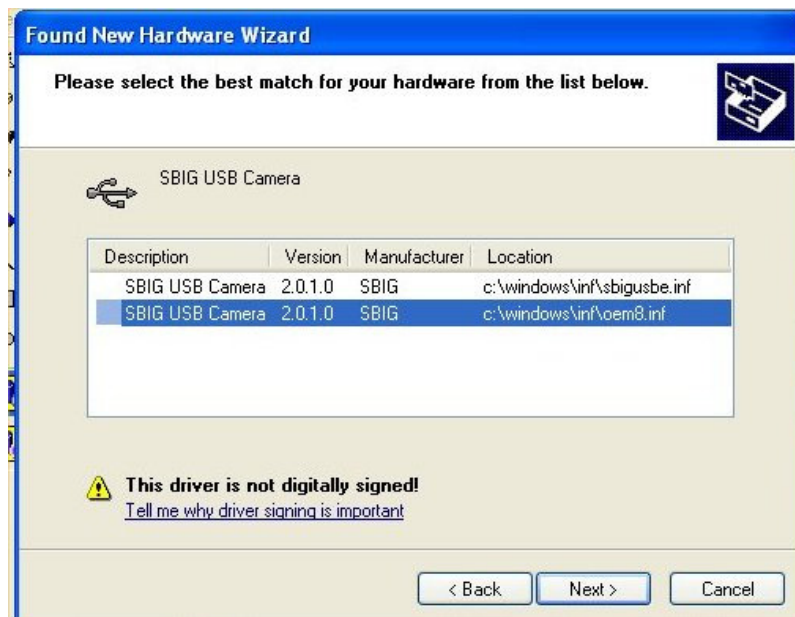
12. Plug in the USB connection for the camera and Windows will automatically detect the new hardware and run the Found New Hardware Wizard:



13. Click **Next** to proceed with camera install
14. You will be asked again about camera driver signing. Click **Continue Anyway**.



15. The software will continue to install and complete.
16. Windows will then automatically run the Found New Hardware wizard a second time (if it doesn't you can run **Add Hardware** manually from the Control Panel)
17. Click **Next** to proceed with camera install
18. You will then be presented with a choice of drivers to install. Choose the bottom option as shown below and click **Next**:



19. Installation will complete.

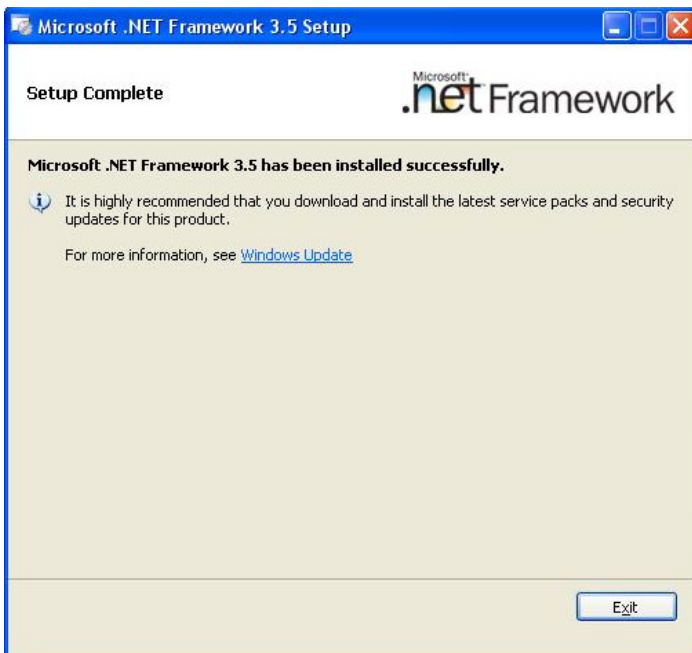
20. Test the camera by taking a test image with CCD Ops (Grab image)

Installing Microsoft .Net 3.5 SP1

1. Insert the recovery DVD and browse to DVD:\Prerequisites\NET Framework 3.5 SP1
2. Run the 'dotnetfx35.exe' file found in that folder.
3. Accept the licence agreement and then click the 'Install >' button.



4. The install will now start. **WARNING:** This may take quite some time.
5. When shown the 'Setup Complete' screen, click the 'Exit' button.



6. If prompted, restart the computer.

Installing Microsoft DirectX (Nov 2007)

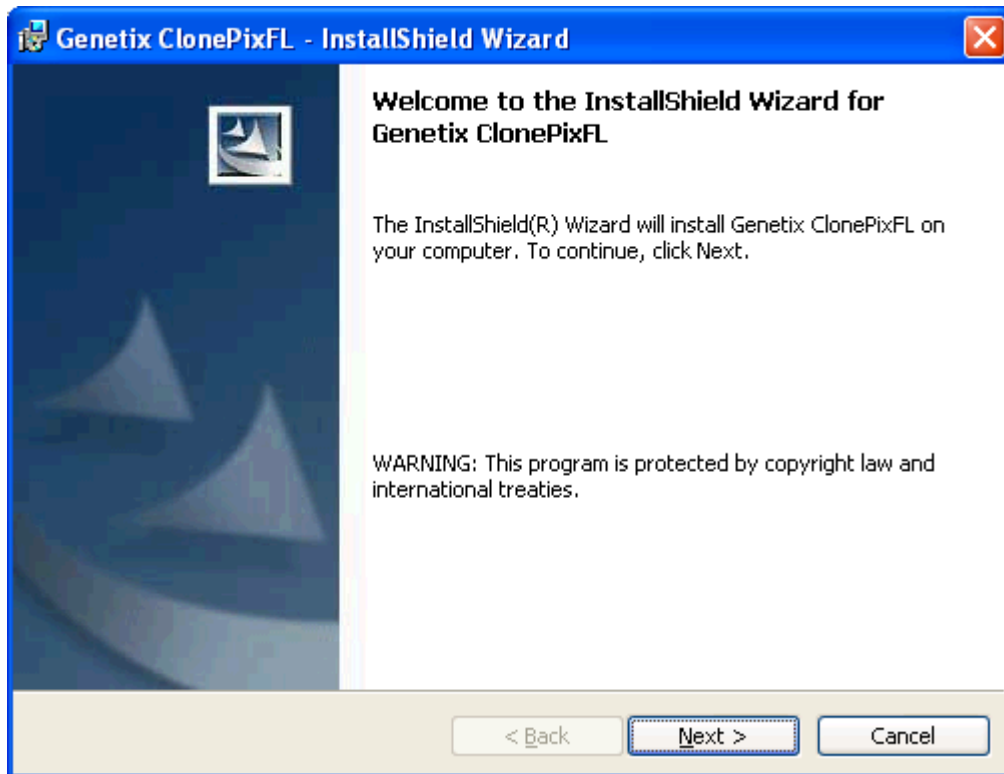
1. Insert the recovery DVD and browse to "DVD:\Prerequisites\DirectX 9.0c (November 2007)"
2. Run the 'DXSETUP.exe' file found in that folder.
3. Accept the licence agreement and then click the 'Next' button.



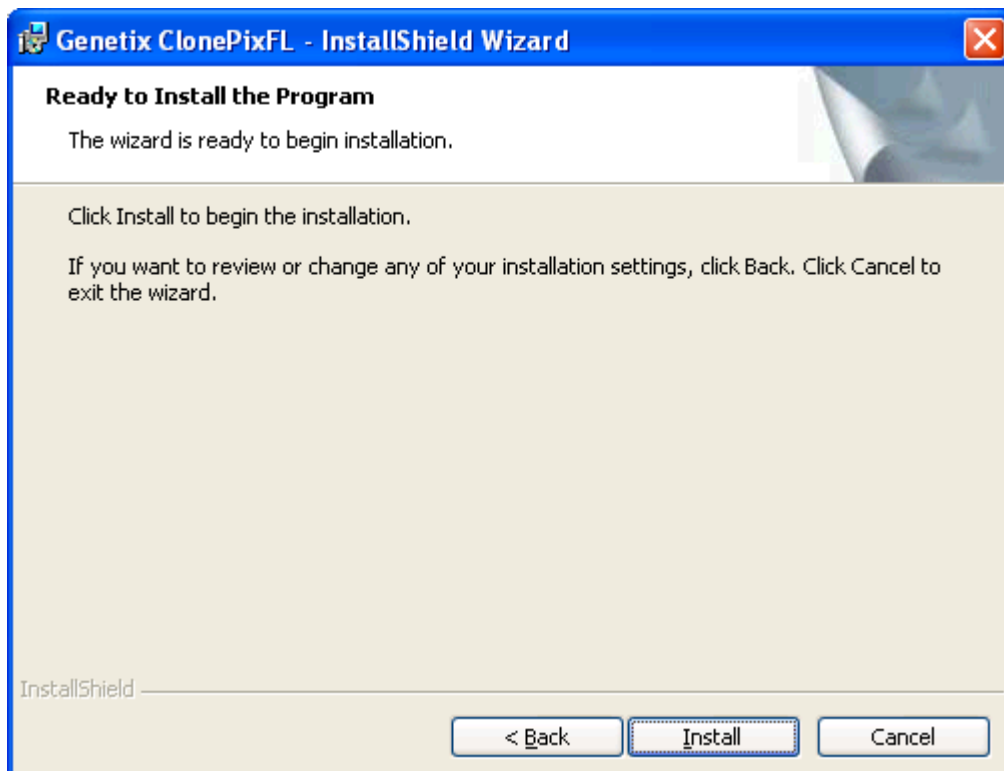
4. Click the 'Next' button.
5. On the 'Installation Complete' screen, click the 'Finish' Button.

Installing the ClonePix FL Software

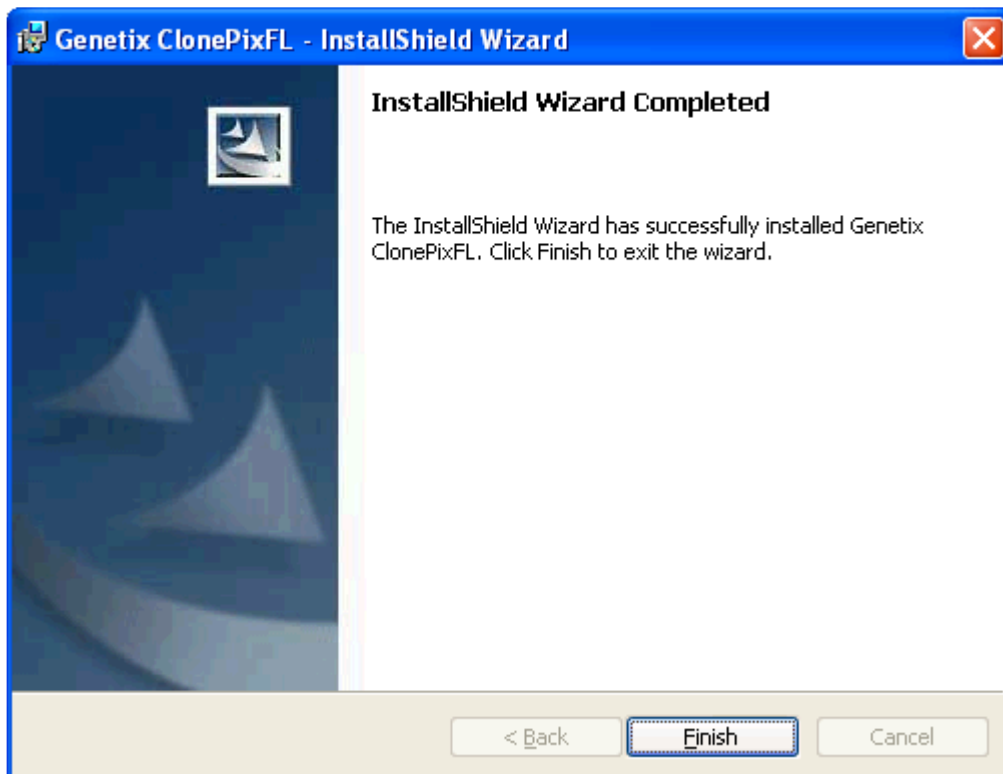
1. Navigate to the "Setup\ClonePix FL x.x.xx.xxxx" folder on the Recovery DVD.
2. Run the file "Setup ClonePixFL.exe".



3. Click "Next" to continue.



4. Click "Install" to install the software.



5. Click "Finish" to complete the installation.
6. Run the "ClonePix FL" software from the "Genetix" folder on the Start menu. The software will prompt for a license – follow the on-screen instructions and acquire a valid license file from a Genetix Support representative.

Installing the ClonePix FL Standard Configuration

1. Insert the recovery DVD.
2. From the Windows "All Programs" button, run:
Genetix->ClonePix FL->Configuration Manager
3. Click the "Restore from File" button and browse to "DVD:\Configuration Template"
4. Select the file correct configuration based on the serial number of the instrument, and press the OK button.
5. Close the configuration manager after confirmation that the restore has been successful.

Proceed to commission the ClonePix FL devices as normal.