



MetaXpress[®] 6 FAQ

Importing and Exporting Application Module Settings

Date Revised 07/07/15 Version B



© 2012-2015. Trademarks property of Molecular Devices, LLC or their respective owners.
For research use only. Not for use in diagnostic procedures.

Frequently Asked Questions Overview

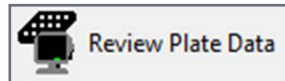
The purpose of this FAQ guide is to guide the user in importing and exporting settings for application modules. This can be useful for sharing with collaborators or with Technical Support for troubleshooting.



Importing/Exporting Application Module Settings

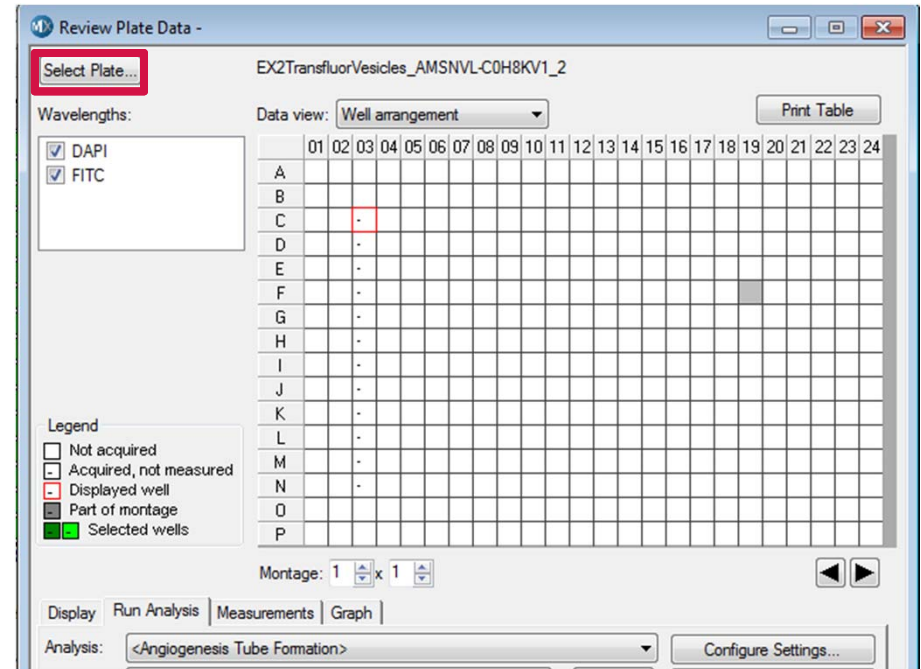
1. Open **Review Plate Data**

- In the main toolbar click on



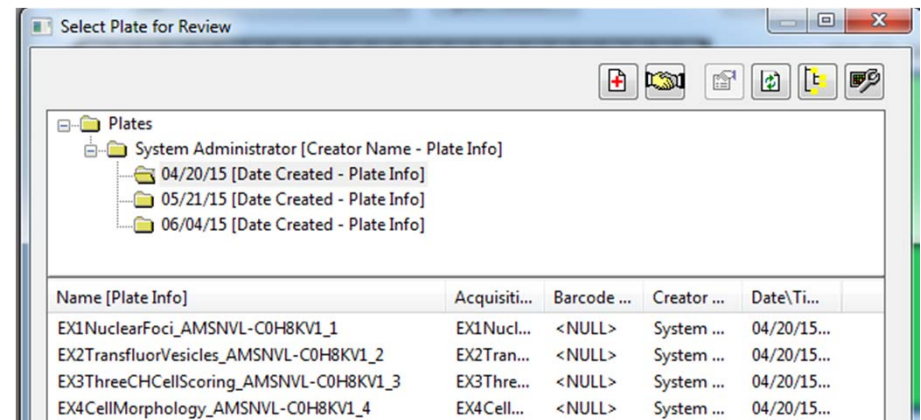
OR

- Under the **Screening** menu, select **Review Plate Data**



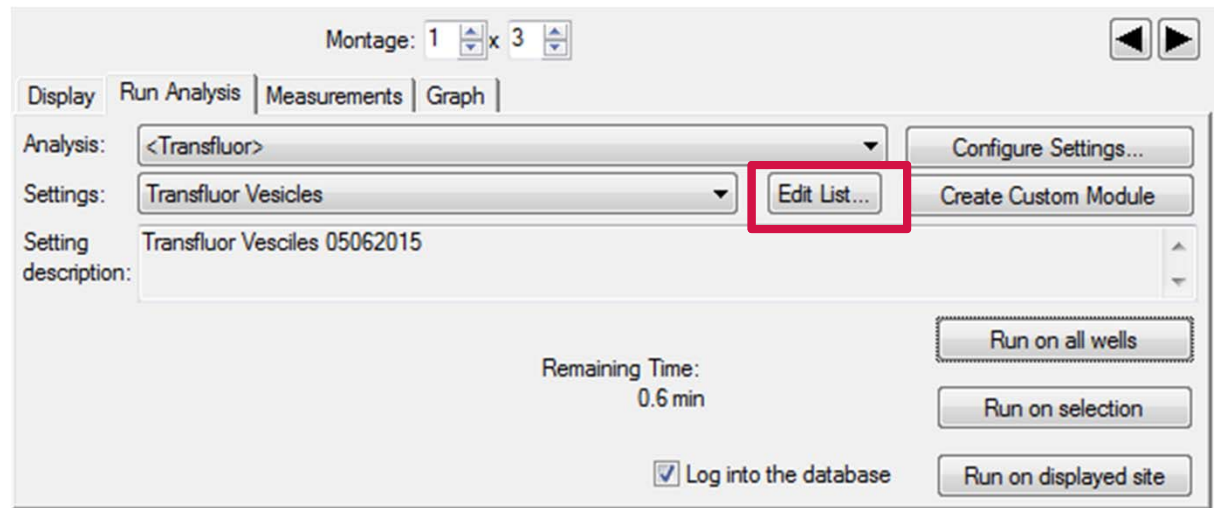
2. Click on the **Select Plate** button

3. Browse through the folders to open the plate of interest



Importing/Exporting Application Module Settings

4. Select the **Run Analysis** tab
5. Select the appropriate application module from the **Analysis** drop-down menu
 - Application modules will appear in <> brackets
 - Journals and Custom Modules do not have <> brackets
6. Click on the **Edit List** button

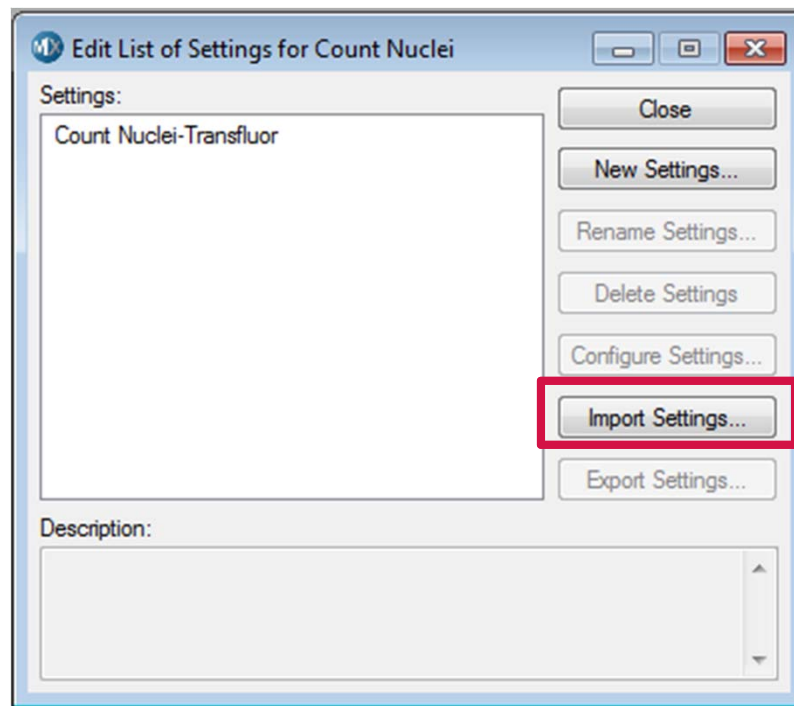


Importing Application Module Settings File

7. Click on the **Import Settings** button
8. Browse through Windows to locate the settings file and click **Open**

NOTE Each application module has its own unique extension. If you cannot find the settings file, double-check that you have selected the correct Application Module on the **Run Analysis** tab. Refer to next section for details.

9. The settings file should now appear in the dialog

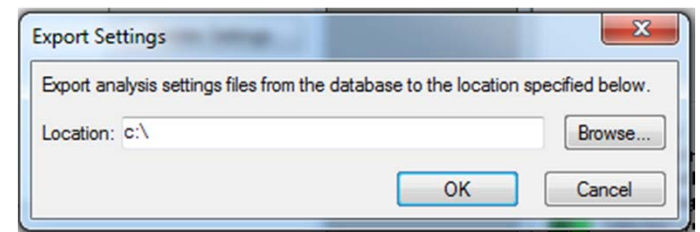
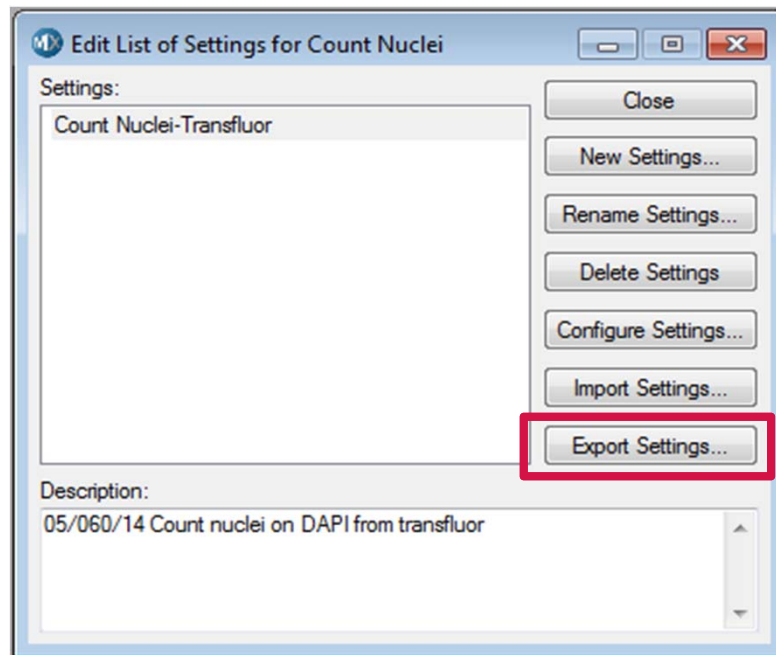


Exporting Application Module Settings File

7. Highlight the settings file of interest
8. Click on the **Export Settings** button

NOTE Each application module has its own unique extension. If you cannot find the settings file, double-check that you have selected the correct Application Module on the **Run Analysis** tab. Refer to next section for details.

9. Click on **Browse** to navigate to Windows to save the file



Application Modules File Extensions

Application Module	ext	Application Module	ext
Angiogenesis Tube formation	*.san	Monopole detection	*.smd
Cell Cycle	*.scc	Multi Wavelength Cell Scoring	*.sms
Cell Health	*.sch	Multi Wavelength Translocation	*.smt
Cell Proliferation HT	*.scp	Neurite Outgrowth	*.sno
Cell Scoring	*.scs	Nuclear Translocation HT	*.snt
Count Nuclei	*.scn	Transfluor HT	*.stf
Granularity	*.sgr	Transfluor	*.sgp
Live Dead	*.sld	Translocation Enhanced	*.ste
Micronuclei	*.smn	Translocation	*.str
Mitotic Index	*.smi		



Support Resources

- F1 / HELP within MetaXpress® Software
- Support and Knowledge Base: <http://mdc.custhelp.com/>
- User Forum: <http://metamorph.moleculardevices.com/forum/>
- Request Support: <http://mdc.custhelp.com/app/ask>
- Technical Support can also be reached by telephone:
 - 1 (800) 635-5577
 - Select options for Tech Support → Cellular Imaging Products → ImageXpress Instruments





ADVANCING PROTEIN AND CELL BIOLOGY