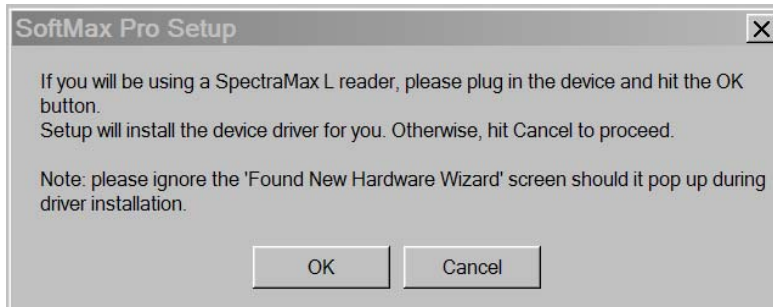


INSTALLING SOFTMAX PRO SOFTWARE AND CONNECTING TO THE INSTRUMENT

The procedure to install SoftMax Pro and connect to the SpectraMax L depends on whether a Windows based PC is being used or a MAC based computer is being used and whether SoftMax Pro is already installed on the computer.

A.) Scenario A - Windows PC Based Computer and No Current Installation of SoftMax Pro 5.3 or higher.

Step 1.) Make sure the USB cable is **not connected** to the instrument and begin installation of SoftMax Pro 5.3 or higher. The Confirm Installation screen will be displayed. Select "OK". The dialog box below will then be displayed.



Step 2.) Turn on the SpectraMax L and connect the computer to the SpectraMax L using the USB cable.

Step 3.) Click the "OK" button on SoftMax Pro Setup dialog box

Step 4.) Open SoftMax Pro, set Preference to SpectraMax L, and try the different available COM ports to find the one for the SpectraMax L. When the correct COM port is selected, the icon of the SpectraMax L reader in the upper left hand corner will be displayed in color. The SpectraMax L is now connected to SoftMax Pro software.

Note: On some computers a "New Found Hardware Wizard" screen may pop up. Ignore this screen.

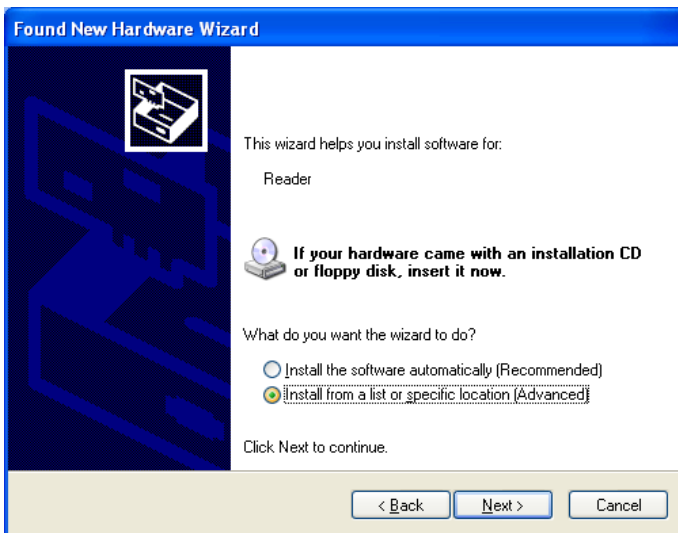
B.) Scenario B - Windows PC Based Computer and A Current Installation of SoftMax Pro 5.3 or higher.

Step 1) Connect the power supply to the electrical outlet and to the instrument. **Connect** the USB cable to both the instrument and to the computer. Power on the SpectraMax L.

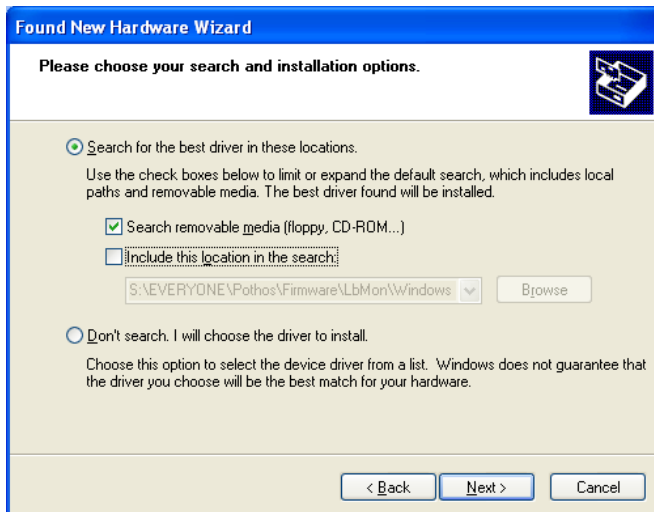
Step 2) Windows XP will show a "Found New Hardware Wizard" screen. This screen will prompt you with "Can Windows connect to Windows Update to search for software?" Select "No" and then press the Next button.



Step 3.) Windows XP will then prompt you to indicate whether you want to let the operating system search for the driver or whether you will direct it where to find the driver. Select, "Install from a list or specific location (Advanced)", and click on "Next" as illustrated below:



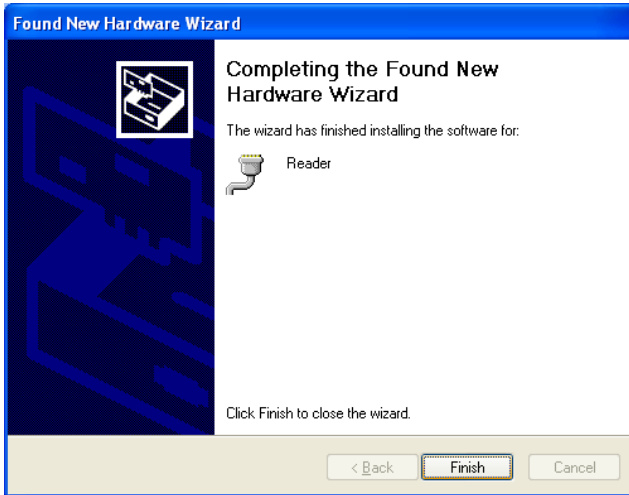
Step 4.) Select the location of the SoftMax Pro files and click on "Next". By default, the location is usually in C:\Program Files \ Molecular Devices \ Softmax Pro., or a quite similar path, unless you installed elsewhere.



Windows XP may then display a warning that the driver "has not passed Windows Logo testing." Click on "Continue Anyway"



Step 5.) Windows XP should display the following screen indicating that it has successfully completed the installation of the hardware. Select "Finish"

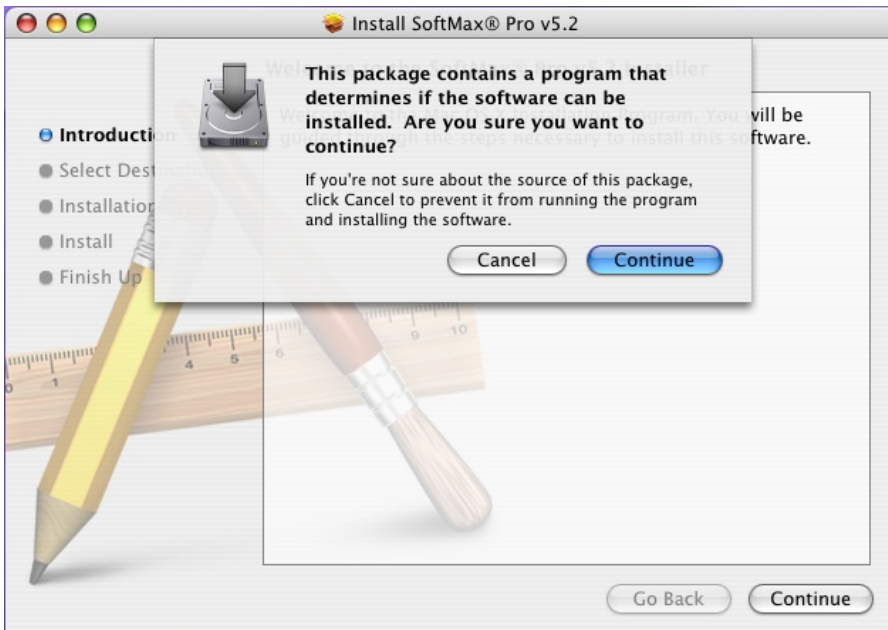


Step 6) Open SoftMax Pro, set Preference to SpectraMax L, and try the different available COM ports to find the one for the SpectraMax L. When the correct COM port is selected, the icon of the SpectraMax L reader in the upper left hand corner will be displayed in color. The SpectraMax L is now connected to SoftMax Pro software.

C.) Scenario C - MAC PC Based Computer and No Current Installation of SoftMax Pro

It makes no difference whether or not the SpectraMax L is connected to the MAC computer when installing SoftMax Pro and connecting to the SpectraMax L

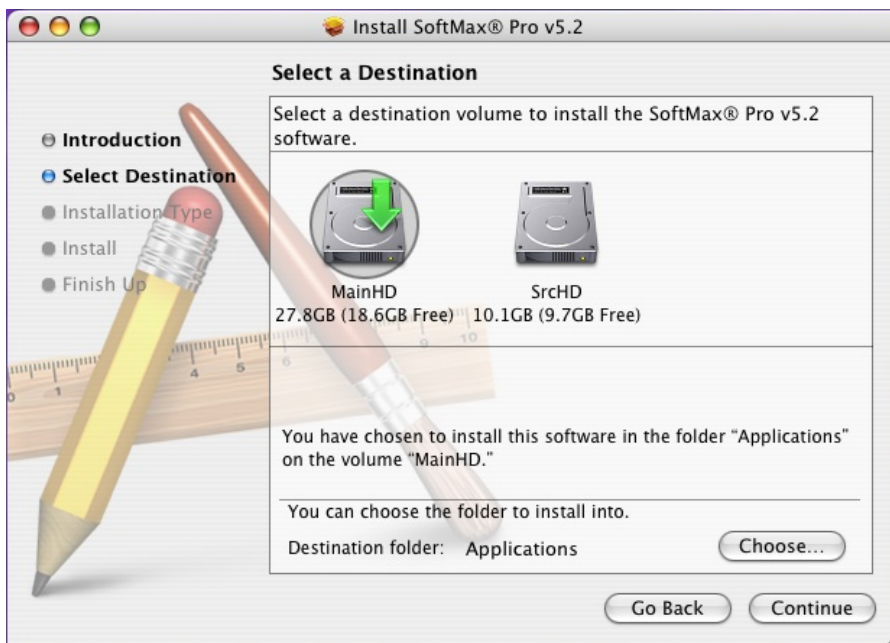
Step 1) Insert the SoftMax Pro software CD into the MAC computer. The following screen will appear. Select "Continue".



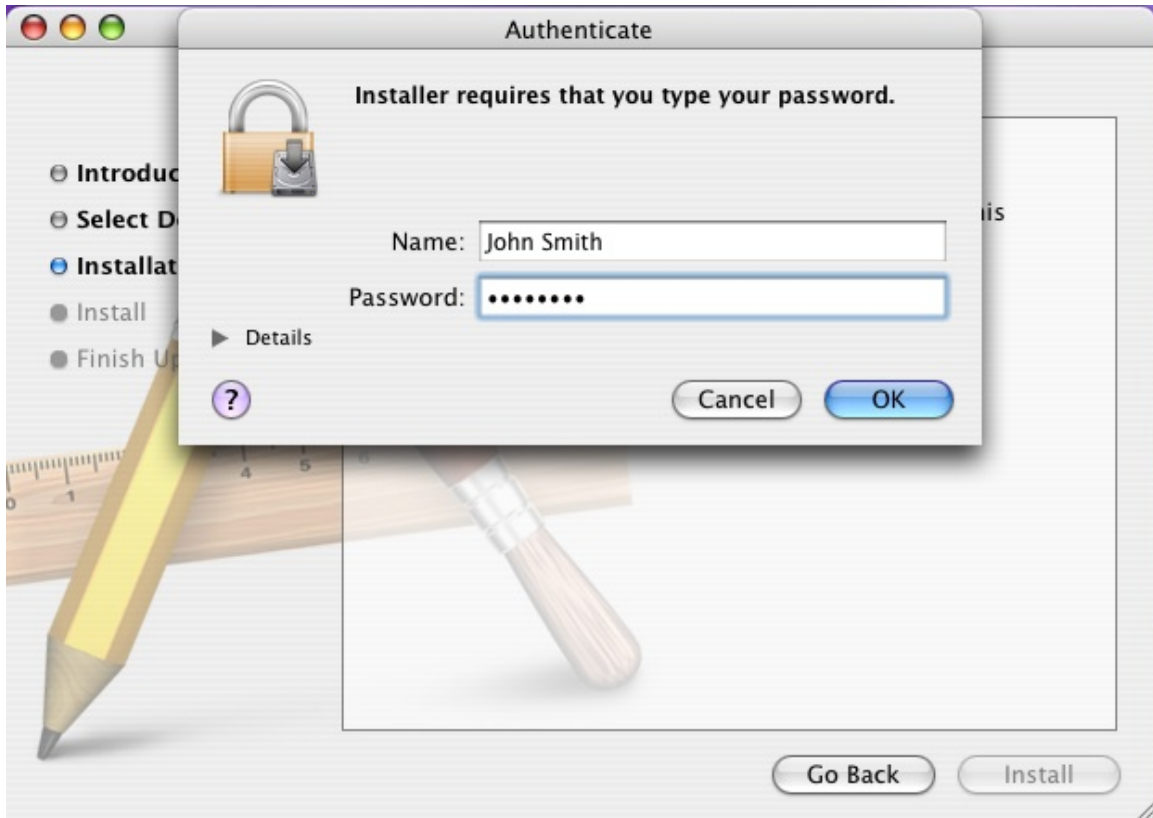
Step 2) The following screen will be displayed. Select, "Continue".



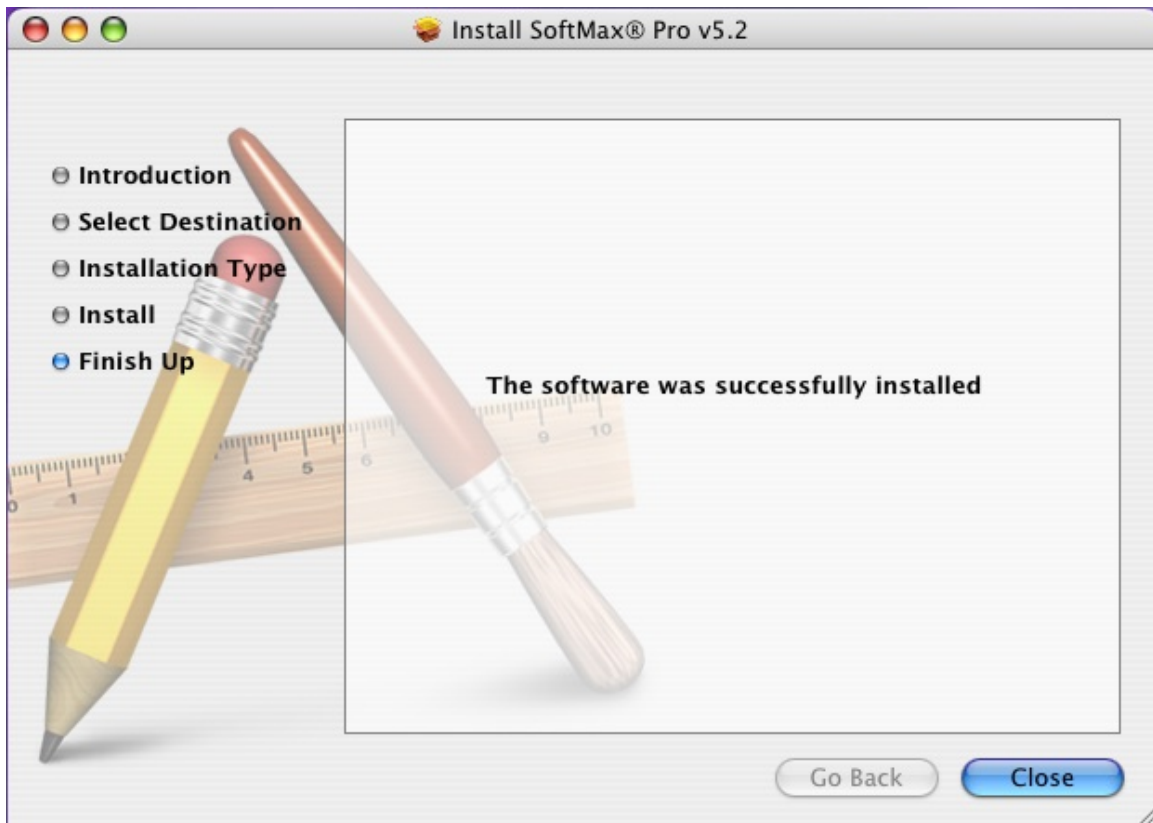
Step 3.) Select a destination volume to install SoftMax Pro and select "Chose".



Step 4.) Enter you name and password and then select "Install".

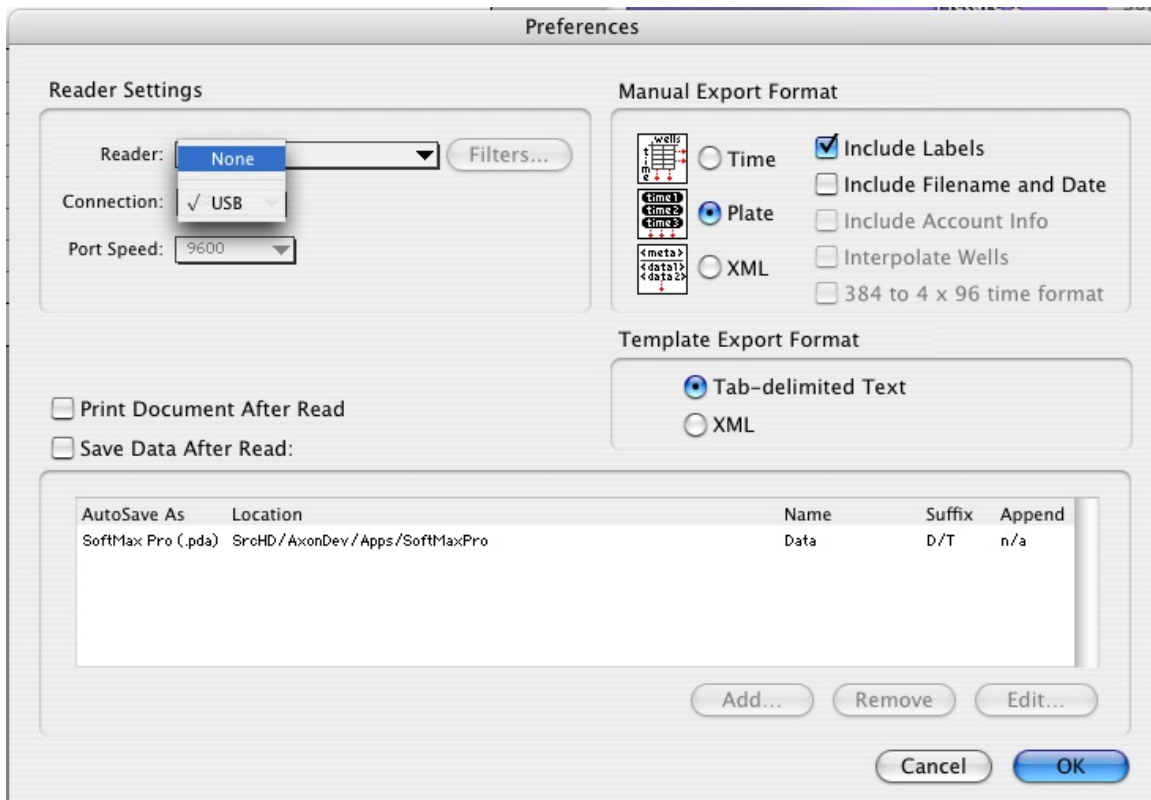


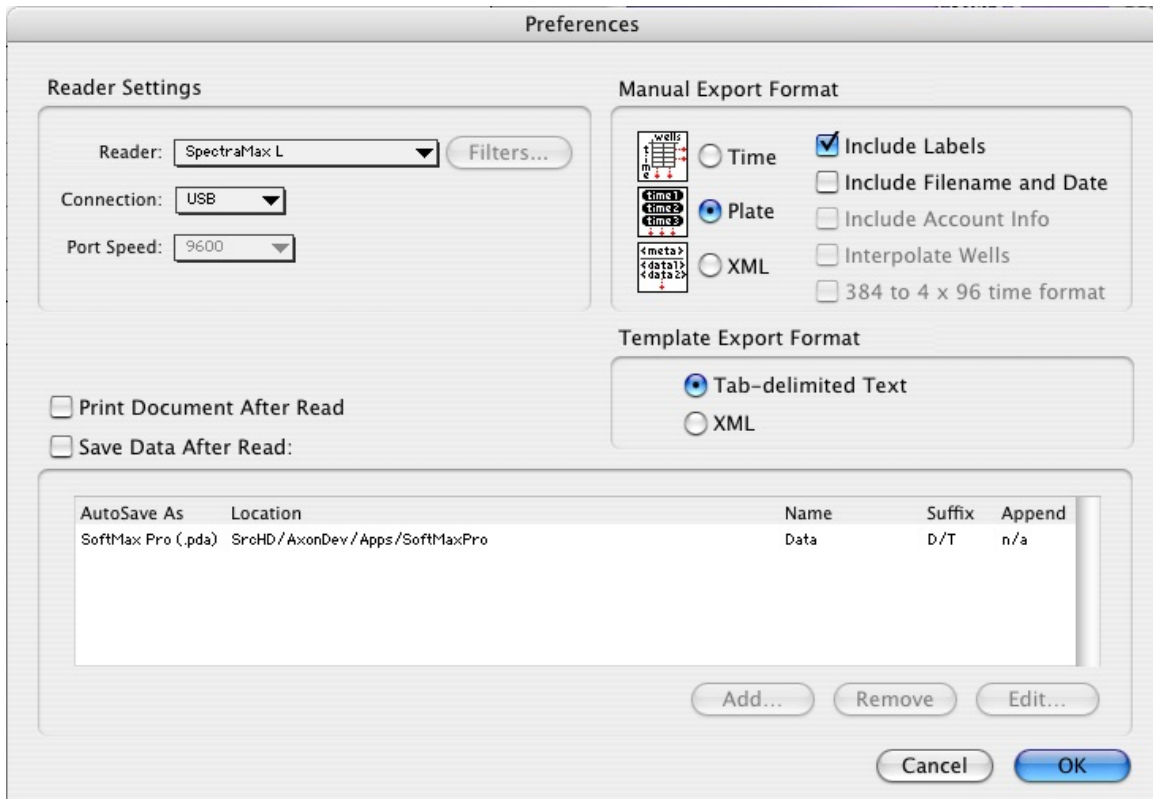
Step 5.) The following screen will be displayed.



Step 6) Connect the reader(if not already connected) to the MAC computer using the USB cable and make sure the reader is turned on.

Step 7) Open SoftMax Pro, set Reader Preference to SpectraMax L, and select "USB" from the Connection menu.





D.) Scenario D - MAC PC Based Computer and A Current Installation of SoftMax Pro
Use the sequence for Scenario C beginning at Step 6.