

File conversion and import function of legacy GxP software files

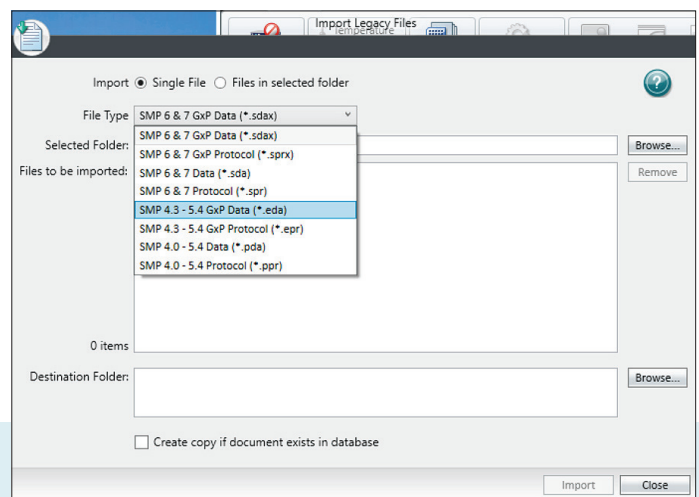
To comply with regulated data retention requirements, management of all SoftMax® Pro Software (SMP) files is easier with SoftMax Pro 71.2 GxP Software edition which allows for importing legacy files into access-controlled folders into a secure SQL database (introduced as a data integrity enhancement in the 7.1.1 version).

Legacy File Import allows single or multiple files (in folder) into database folders you can design for Data Archival.

- SMP 4.0 – 5.4 Protocol files: (*.ppr)
- SMP 4.0 – 5.4 Data files: (*.pda)
- SMP 6 & 7 Protocol files: (*.spr)
- SMP 6 & 7 Data files: (*.sda)
- SMP GXP 4.3 – 5.4 GxP Protocol files: (*.epr)
- SMP GXP 4.3 – 5.4 GxP Data: (*.eda)
- SMP GXP 6.0 – 7.0.3 GxP Protocol files: (*.sprx)
Files not yet imported into the database
- SMP GXP 6.0 – 7.0.3 GxP Data files: (*.sdax)
Files not yet imported into the database

File Conversion into the latest software version file format occur during the import function:

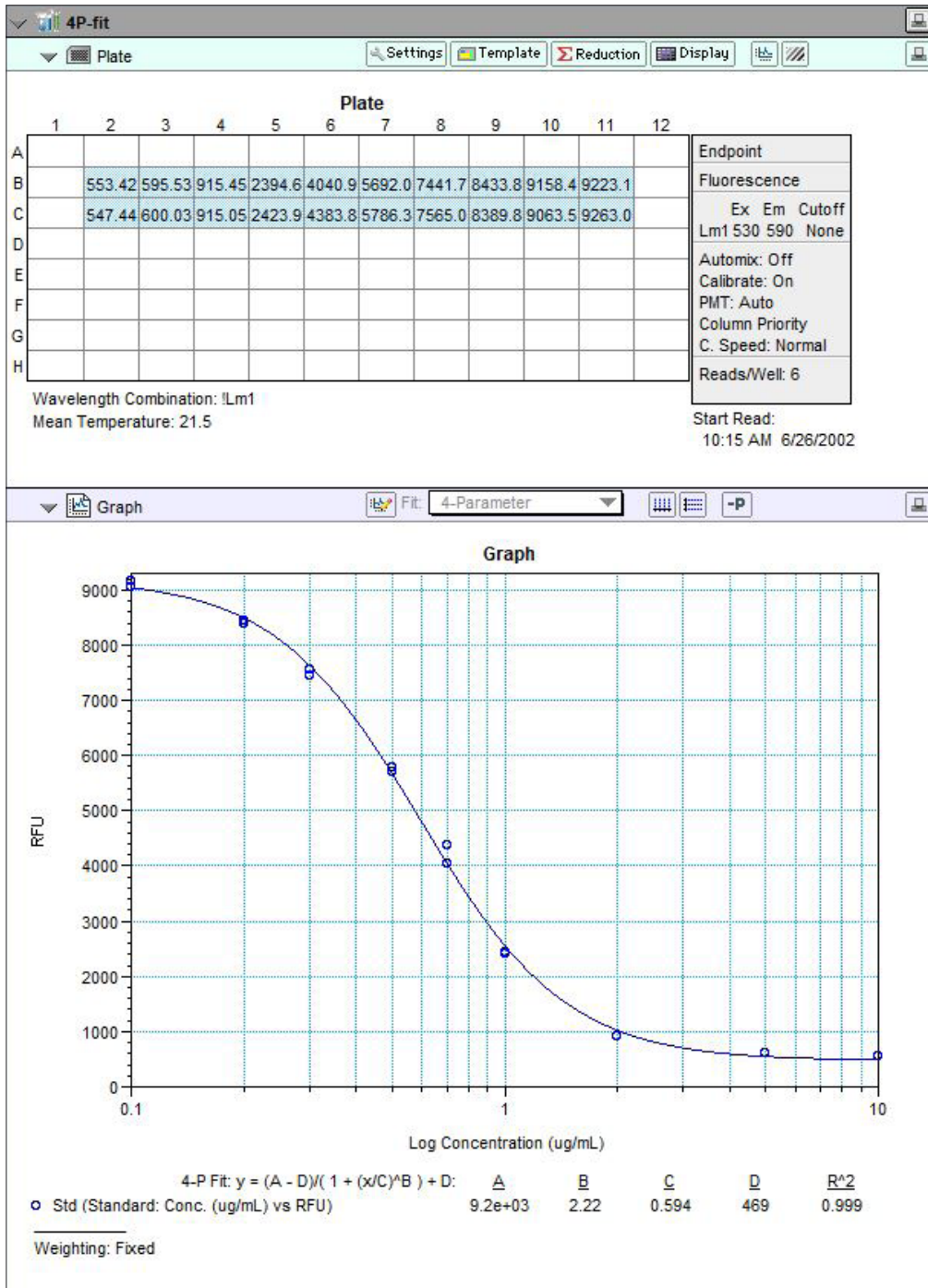
- SMP GXP 6 & 7 GxP Protocol files: (*.sprx)
- SMP GXP 6 & 7 GxP Data files: (*.sdax)



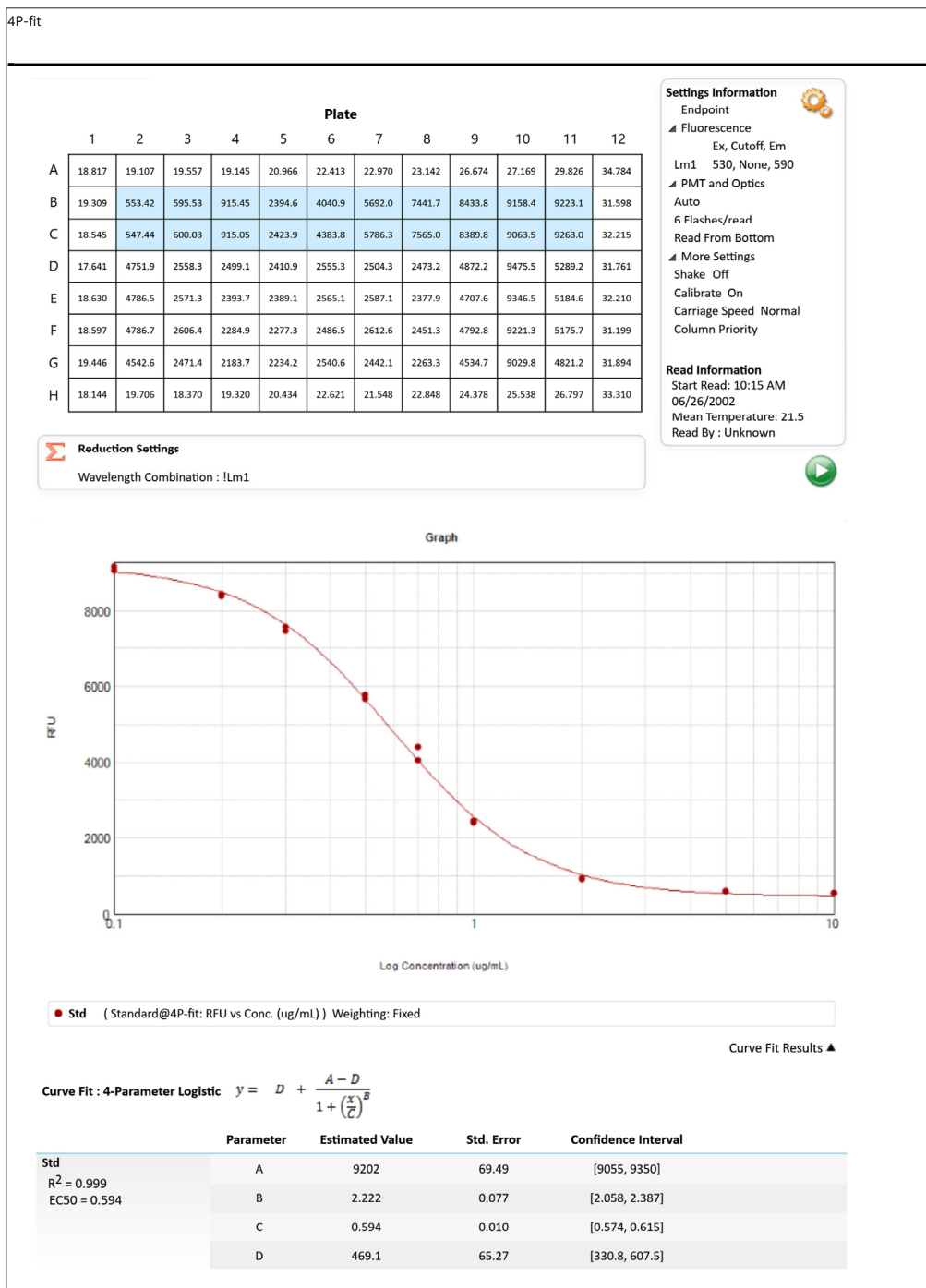
Key features

- Ongoing data retention requirement is maintained
- Legacy file formats are converted into the most current format
- Regulated data are imported into a secure database
- Document audit trails are imported

Original PDA file when opened in SoftMax Pro 5.4 GxP Software



Converted into SDAX file when opened in SoftMax Pro 71.2 GxP Software

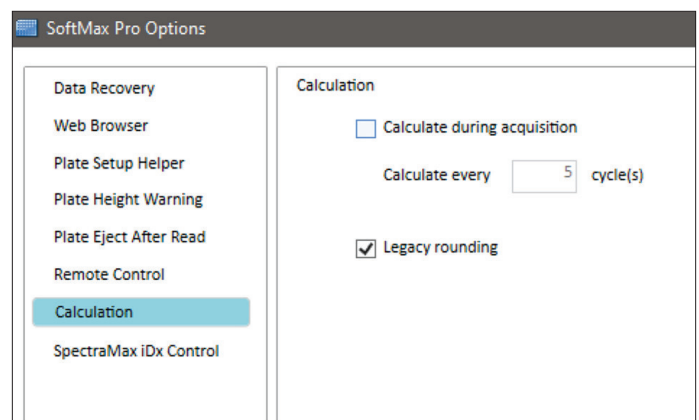


Starting with SoftMax Pro GxP Software version 6.0, the calculations done by the software on real numbers use 64-bit, double-precision (15+ digits of precision) as defined by the Institute of Electrical and Electronics Engineers standard for floating point arithmetic (IEEE 754). Computations always use the maximum available precision. Rounding occurs only as required for display formatting purposes, or in the evaluation of a formula in which the round operator is used.

Note: In SoftMax Pro Software versions prior to version 6.0, the software used a text-conversion algorithm with a slight upward bias. This can result in a mismatch between the rounded values in the newer version and the older version.

Example: When rounding the raw value 14.849999... to one decimal place, versions 6.0 and newer display 14.8, while older versions display 14.9. This does not affect the accuracy of the calculations, since rounding occurs only as required for display formatting purposes, or in the evaluation of a formula in which you use the round operator. Computations always use the maximum available precision.

Starting with SoftMax Pro Software version 7.1, the **Legacy Rounding** option improves consistency with the SoftMax Pro Software version 5 which introduces a small factor to force rounding upward.



Contact Us

Phone: +1.800.635.5577
Web: www.moleculardevices.com
Email: info@moldev.com
Check our website for a current listing of worldwide distributors.

Regional Offices

USA and Canada	+1.800.635.5577	Taiwan/Hong Kong	+886.2.2656.7585
United Kingdom	+44.118.944.8000	Japan	+81.3.6362.9109
Europe*	00800.665.32860	South Korea	+82.2.3471.9531
China	+86.4008203586	India	+91.73.8661.1198

*Austria, Belgium, Denmark, Finland, France, Germany, Iceland, Ireland, Italy, Luxembourg, Netherlands, Portugal, Spain, Sweden, Switzerland and United Kingdom