



# SoftMax Pro 6 Microplate Data Acquisition and Analysis Software

## Key Features

- Simple and customizable assay setup
- Flexible and powerful data analysis
- Easy export to Excel
- Leading robotic systems integration capabilities
- Extensive user community
- Optional validation tools
- Complete FDA 21 CFR Part 11 compliance tools

SoftMax® Pro Software offers comprehensive data capture, reduction and analysis capabilities for the wide selection of microplate readers from Molecular Devices. An industry-recognized software with over 100,000 users world wide is built on over 25 years of experience and user feedback from pharmaceutical, biotechnology, academia, hospital, and government laboratories.

With over 140 ready-to-run protocols for life science research and drug discovery assay development and screening, scientists can be up and running in minutes. For unique research needs, SoftMax Pro Software offers protocol setting flexibility and powerful data analysis features. The sophisticated formula writing option is now simplified with Syntax Helper providing maximum flexibility with minimal effort.

Some of the key highlights in SoftMax Pro 6 Software include:

- Redesigned look and feel to have you up and running in minutes
- Clear results' display with 3-D graph feature
- Simplified formula writing with Syntax Helper
- Customized reporting with image import options, live display of mini-graphs and tables

- Most robust reading and data analysis package available with plate cloning and additional curve fits
- Additional instrument support with controls for SpectraMax® Paradigm® and FilterMax™ Systems
- Peace of mind with built-in data recovery feature
- User community for protocol sharing and exchanging tips and tricks with other experienced users

## Two editions to meet your needs

SoftMax Pro 6 Software is available in two editions. Standard edition has the reader support, data reduction and analysis features required for research, while the GxP version offers additional features optimized for GLP/GMP/GCP compliance guidelines. Additional validation tools are available to reduce the time, effort, and cost of validating Molecular Devices' microplate systems.

# Simple, yet flexible and powerful

## Simple setup

SoftMax Pro Software simplifies setting up your assays by providing:

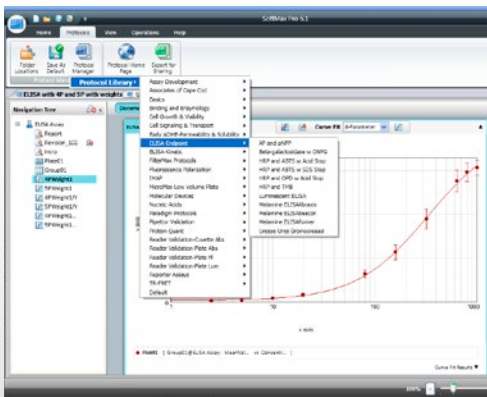
- Automatic instrument recognition
- Over 140 pre-written protocols for popular assays
- A wide variety of scan types: Endpoint, Kinetic, Spectral Scanning, and Well Scanning
- Standard data reduction settings are pre-selected as default
- The spectral optimization wizard for signal window optimization (on selected instruments)
- Patented PathCheck® Technology to automate well volume normalization for OD measurements (absorbance instruments only)
- Automatic data recovery feature
- Contemporary user community enabling protocol exchange and expertise sharing among our numerous users

## Customizing options

SoftMax Pro 6 Software offers a variety of customizing options:

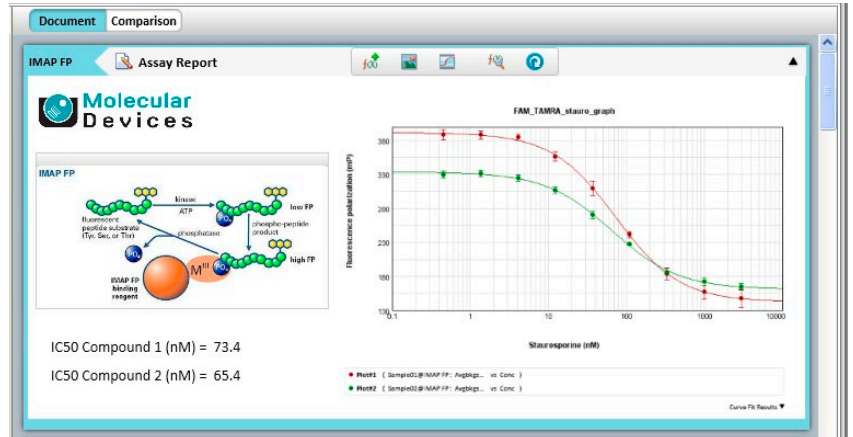
- Predefined calculation options for common data analysis functions
- Easy export to Microsoft Excel

## Select ready-to-read protocols



SoftMax Pro 6 offers over 140 pre-written protocols and more are available online as part of the SoftMax Pro Software User Community.

## Customize notes



In SoftMax Pro 6 Software, the Note section allows for image display, and graphs and tables with automatic data refresh function. Custom reports can now be saved as part of the protocol itself.

- Instrument settings and plate read area can be adjusted to suit your experiment's needs
- Custom data reduction settings can be selected for optimal signal selection
- Full reports, with font flexibility, and live mini-tables and graphs are now available within the Notes section to simplify the result sharing experience

## Full experimental control

SoftMax Pro 6 Software helps organize and view experimental data in an easy, logical fashion. It offers full control to add, move, or delete sections, change font styles, and much more.

- Access curve fit parameters in formula tables
- Change data calculations easily using Reduction menu items
- Include multiple plates, cuvettes, graphs, analysis tables, and notes in the same data file
- Display data as OD, RFU, RLU, reduced number, grayscale, color map, or in 3-D
- Combine absorbance and fluorescence data to calculate a single result
- View side-by-side graphs and tables from different sections of your experiment

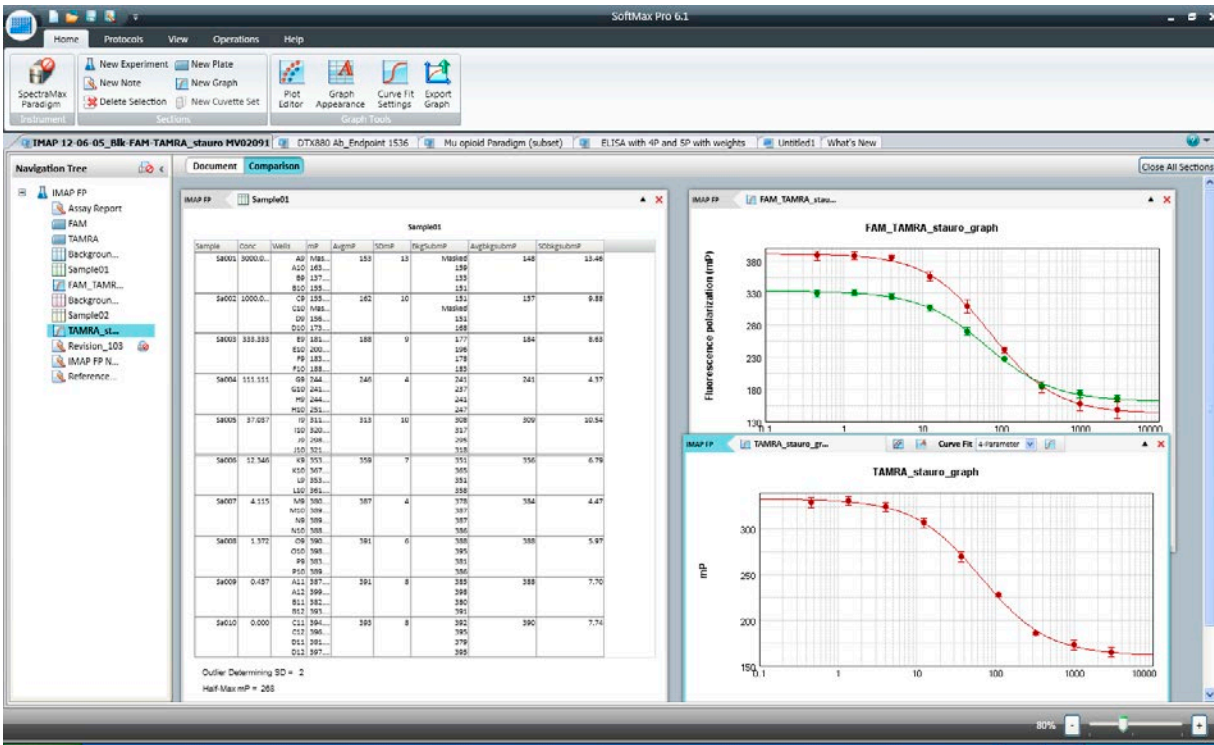
## Flexible calculations and formulas

Use the extensive set of predefined Reductions, Columns, and Summary formulas, or create custom calculations with ease thanks to the Syntax Helper.

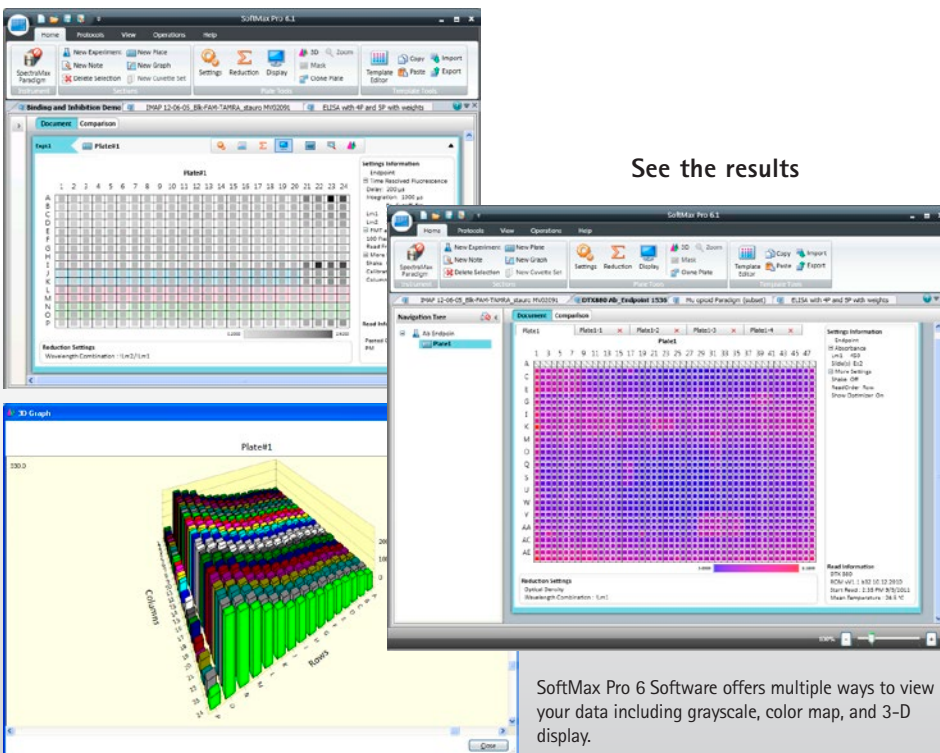
- Perform extensive mathematical calculations within and across multiple columns of data
- Apply a single standard set across multiple plates to perform cross-plate analysis and interpolation
- Easily analyze common calculations like EC<sub>50</sub> and Z-factors to identify potency and assay quality
- Apply Chi-squared and F-test statistics to PLA
- Clone your plate data for multiple data reduction options
- Graph your results with 18 curve fit options

# View your data in multiple ways

## View the data



SoftMax Pro 6 Software enables multiple data viewing options among them the Comparison View allowing users to view multiple sections of their experiment side by side.



## See the results

## Tailored data analysis

No need to waste time exporting data to external applications for analysis. In addition to the more than 140 predefined experiment protocols, use the straightforward yet powerful programming capabilities of SoftMax Pro 6 Software to quickly analyze data.

- Perform multiple calculations on one data set with the Plate Cloning option
- Analyze data in a single plate, across multiple plates, or between different groups
- Use comparison view to look at multiple sections of your experiment side-by-side
- Zoom into desired wells, then adjust reduction parameters while collecting real-time data for Kinetic and Spectral Scans
- Report data using conditional formulas and apply variable weighting
- Create results summary reports with live mini-graphs and tables

SoftMax Pro 6 Software offers multiple ways to view your data including grayscale, color map, and 3-D display.

# GxP tools for FDA 21 CFR Part 11 compliance

## Powerful compliance tools

SoftMax Pro 6 GxP Software provides FDA 21 CFR Part 11 compliance tools in conjunction with data acquisition and analysis for 20+ Molecular Devices microplate readers:

- Electronic signature support for verification, authorization, and approval
- Powerful user management options with controlled user access; multiple administrators; granular control on user permissions and remote administration of user accounts files
- User license control for increased security
- Password aging
- Log on failure lockout and automatic idle log out
- Off line usage and guest access
- Audit Trail to track and record actions
- TCP/IP-based hosting of User Accounts files
- Centralized site-license administration

## Faster, easier validation

Optional hardware and software validation tools are designed to speed and simplify the validation process by making it easier to demonstrate compliance of data collection and analysis. Available tools include:

- All-inclusive software validation package for SoftMax Pro Software
  - Instructions and worksheets for Installation Qualification (IQ)
  - Instructions and worksheets Operational Qualification (OQ) for routine calculations and important curve fits including Parallel Line Analysis
  - Details on SoftMax Pro GxP Software features for implementation of FDA's 21 CFR Part 11 compliance requirements
  - Molecular Devices Software Life Cycle Process (SDLC); Quality assurance procedures and policies
- Validation Plates for precise optical verification of microplate readers with detailed protocols and calculations
- On-site service for IQ-OQ and preventive maintenance by a certified field service engineer that includes:
  - A complete qualification report with calibration certification on printed or digital copy
  - Compliance to 21 CFR Part 11 requirements with electronic signatures with date/time stamps
  - Instant results with automated calculations built into the protocols for error free procedure
  - Preventive maintenance is performed to assure the best working condition for the microplate reader

## Achieve GxP compliance

The screenshot displays the SoftMax Pro 6 GxP Software interface with several windows open:

- Log On:** A window for user authentication with fields for username (Tendulkar) and password, and a 'Log On' button.
- Audit Trail:** A window showing a list of system events, including user logins, password changes, and statement approvals.
- Statements:** A window showing a list of statements with details such as 'Statement 1: Approved' and a table of required actions and expected results.
- User Account Information:** A window displaying user details for Sachin Tendulkar, including the log on time and a list of permissions.

Step	Required Actions	Expected Results	Pass/Fail
1	Open and log on to the SoftMax Pro GxP Software.	The SoftMax Pro GxP Software window opens.	
2	Open the <b>Results</b> file.	The <b>Results</b> file is opened on its own tab in the SoftMax Pro GxP Software window.	
3	Open the <b>Operations</b> tab on the SoftMax Pro GxP Software ribbon, and in the <b>Calculations</b> section, click <b>Recalculate Now</b> .	The data in the file is recalculated.	
4	In the <b>Navigation Tree</b> , in the <b>Internal Experiment</b> section, select <b>Checks</b> .	The <b>Checks</b> section is opened in the Workspace.	
5	Inspect the <b>Parameter Check</b> summary formula.	<b>PASS</b> should be displayed for all values.	
6	Inspect the <b>Interp</b> Check summary formula.	<b>PASS</b> should be displayed for all values.	
7	Inspect the <b>Interp</b> Check summary formula.	<b>PASS</b> should be displayed for all values.	
8	In the <b>Navigation Tree</b> , in the <b>Unweighted</b> experiment section, select <b>Results</b> .	The <b>Results</b> section is opened in the Workspace.	
9	Inspect the <b>Relative Difference</b> column.	All values should be less than 0.001 in magnitude.	
10	In the <b>Navigation Tree</b> , in the <b>Weighted</b> experiment section, select <b>Results</b> .	The <b>Results</b> section is opened in the Workspace.	
11	Inspect the <b>Relative Difference</b> column.	All values should be less than 0.0001 in magnitude.	
12	Close the <b>Results</b> file.	The <b>Results</b> file is closed. The SoftMax Pro GxP Software window remains open.	

SoftMax Pro GxP Software contains features designed to assist a company's validation program for compliance with FDA 21 CFR Part 11 requirements including: electronic signatures, data and administrative audit trails, user management, and password aging.

## Ready for your automation solution

### Robotics and LIMS integration

By supporting the latest Windows Communication Foundation (WCF) programming technology, SoftMax Pro 6 Software simplifies integration with leading robotics and LIMS providers. SoftMax Pro Software has been integrated by leading LIMS providers.

- Export plate data to LIMS via ASCII text or XML
- Leverage the command interface to automate SoftMax Pro Software functionality
- Communicate with plate and liquid handling, plate moving, and storage robots
- Import LIMS template information
- Utilize abundant sample source code in C++

### A complete package

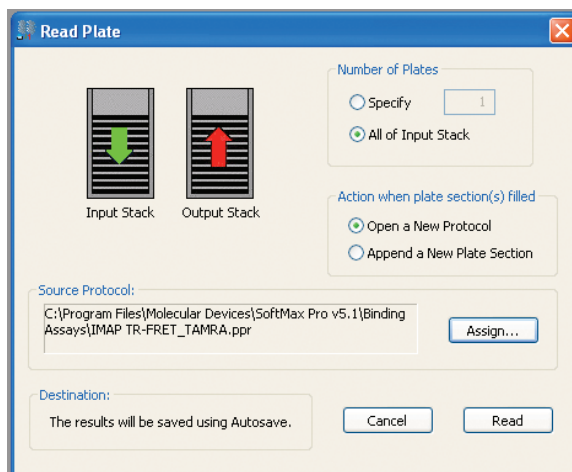
For over 25 years SoftMax Pro Software has offered industry-leading support for more than 100,000 users. The ease of use and continuous improvement of the software has ensured a loyal customer base.

- Over 140 predefined assay protocols to get you up and running fast
- Context sensitive application help for quick access to related help topics
- Single software for data acquisition and data analysis eliminate the need for data exporting
- Formatting flexibility of Reporting section simplifies result sharing



SoftMax Pro Software has been integrated by many leading robotics and LIMS partners, enabling both data analysis and instrument control in automated environments.

### Automate with StakMax Microplate Stacker



SpectraMax Absorbance, Fluorescence, Luminescence, and Multi-Mode Readers can be integrated with the StakMax® Microplate Stacker. System setup and calibration are controlled from within SoftMax Pro 6 Software.

## System requirements

### Minimum system requirements

- Computer with a 2GHz or faster processor
- 2GB RAM
- 100MB of available hard disk space
- 1024 x 768 or higher-resolution display
- CD-ROM Drive
- RS-232 serial port or USB 2.0 port with a Keyspan USB-to-serial adapter
- Windows XP, 32-bit (x86), with Service Pack 3
- Windows 7, 32-bit or 64-bit (x86 or x64)
- .NET Framework 4.0\*

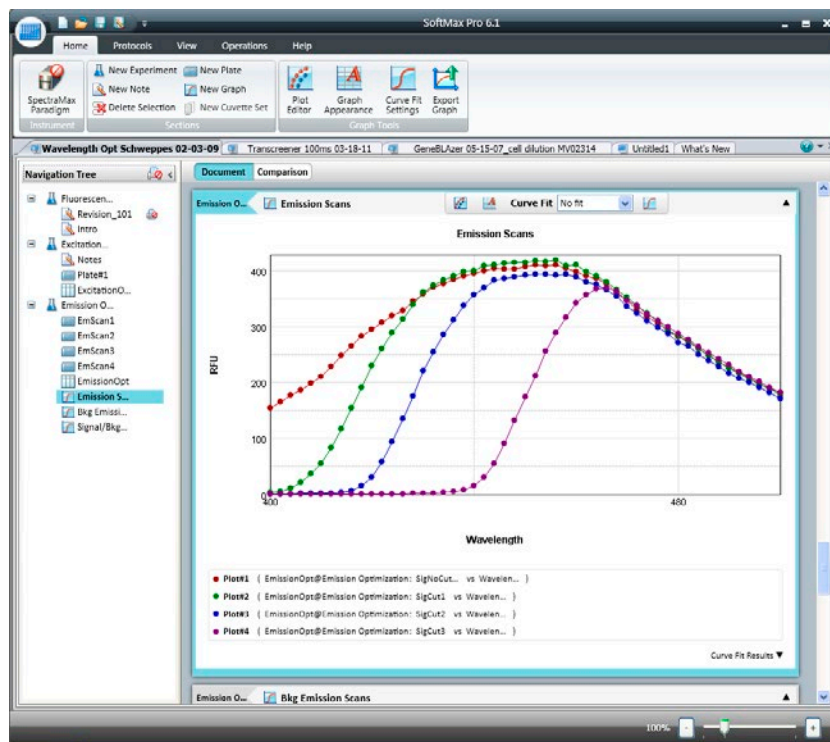
### Recommended system requirements

- Computer with a 2GHz or faster processor and quad-core or higher CPU\*\*
- 4GB RAM\*\*
- 500MB of available hard disk space
- 1280 x 1024 or higher-resolution display
- DVD-ROM Drive
- RS-232 serial port
- Windows 7, 32-bit or 64-bit (x86 or x64)
- .NET Framework 4.0\*
- Internet Connection

\* .NET Framework 4.0 is installed automatically by the SoftMax Pro Software installer if necessary.

\*\* If running in a virtual machine, Molecular Devices recommends a quad-core or faster processor with at least 6GB RAM.

## SoftMax Pro 6 Software



SoftMax Pro 6 Software—the easiest to use yet most powerful microplate data acquisition and analysis software available.

### Contact Us

Phone: +1-800-635-5577  
Web: [www.moleculardevices.com](http://www.moleculardevices.com)  
Email: [info@moldev.com](mailto:info@moldev.com)

Check our website for a current listing of worldwide distributors.

### Regional Offices

USA and Canada +1-800-635-5577  
Brazil +55-11-3616-6607  
China (Beijing) +86-10-6410-8669  
China (Shanghai) +86-21-3372-1088  
Germany 00800-665-32860

Japan (Osaka) +81-6-7174-8831  
Japan (Tokyo) +81-3-6362-5260  
South Korea +82-2-3471-9531  
United Kingdom +44-118-944-8000

