

## Enhanced flexibility in regional picking with new custom tray definitions

QPix 400 Series Software 2.0 Release

### Key Benefits

- Accurate and versatile colony selection based on user-defined picking regions
- Expanded compatibility to accommodate various source plates
- Intuitive software interface for quick and easy setup

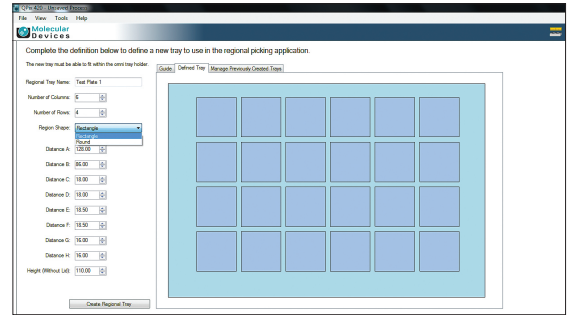
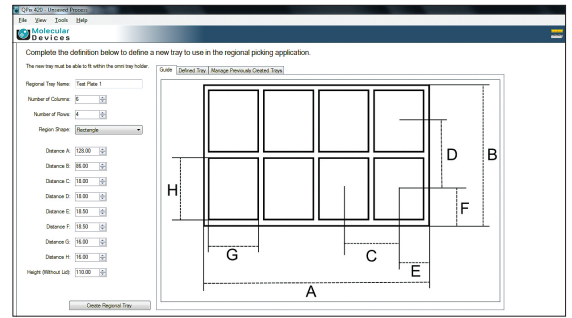
The QPix™ Software 2.0 release introduces new functionalities that expand workflow flexibility and tailor to unique application needs. The new software module "Create Regional Tray" allows definition of standard microplates based on manufacturer's specifications. It also enables custom 2-, 4-, 8- and 24-rectangular or round regions to be defined on a tray and subsequently used in regional picking.

Advanced imaging algorithm segments the plate into custom defined regions. Tunable colony selection parameters allow users to set the number of colonies to pick per region.

Whether it is for library management or colony screening in selective media, regional picking together with custom plate and region definitions offers greater workflow flexibility in just a few clicks.

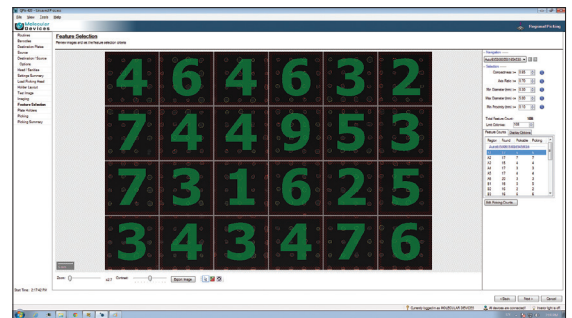
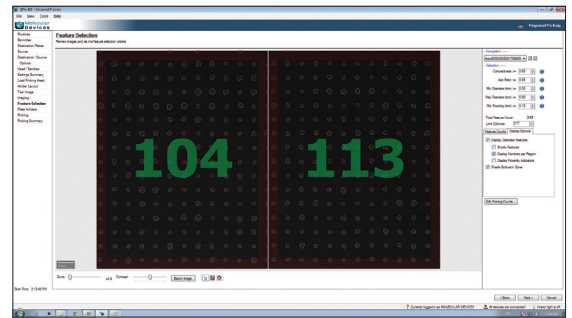
## Create Custom Regional Tray

- 1 Select **Create New Regional Tray** under New Process tab
- 2 Define parameters of a new tray by setting number of columns/rows, plate height, depth, width, diameter, etc, based on manufacturer's specifications
- 3 Save the newly created tray for use in the **Regional Picking** process. Repeat steps to create custom trays with 2-, 4-, 8- or 24-regions



## Select Custom Tray for Regional Picking

- 1 Select **Regional Picking** under New Process tab
- 2 Choose newly created regional tray from drop down menu
- 3 Step through the settings for imaging and picking
- 4 At the Feature Selection stage, set the number of colonies to pick for each region



## Ordering information

The Create Regional Tray module is included in QPix Software version 2.0 and higher. Contact your Molecular Devices sales representatives for upgrade and licensing options.

Software Version 2.0 Upgrade for QPix™ 420 System  
Part Number: SL9400-A08

Software Version 2.0 Upgrade for QPix™ 450/460 System  
Part Number: SL9400-A09

### Contact Us

Phone: +1-800-635-5577  
Web: [www.moleculardevices.com](http://www.moleculardevices.com)  
Email: [info@moldev.com](mailto:info@moldev.com)  
Check our website for a current listing of worldwide distributors.

### Regional Offices

USA and Canada +1-800-635-5577  
Brazil +55-11-3616-6607  
China (Beijing) +86-10-6410-8669  
China (Shanghai) +86-21-3372-1088  
Germany 00800-665-32860

Japan (Osaka) +81-6-7174-8831  
Japan (Tokyo) +81-3-6362-5260  
South Korea +82-2-3471-9531  
United Kingdom +44-118-944-8000

